



MEVA wall braces

**Strong and convincing –
flexible and modular**

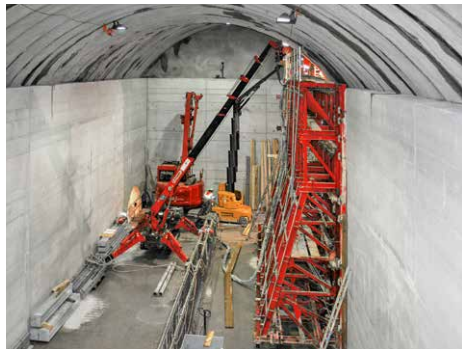


MEVA support frames and brace brackets

The clever system for single-sided tying

Ideal for single-sided formwork up against earth walls and the sides of the temporary construction pit

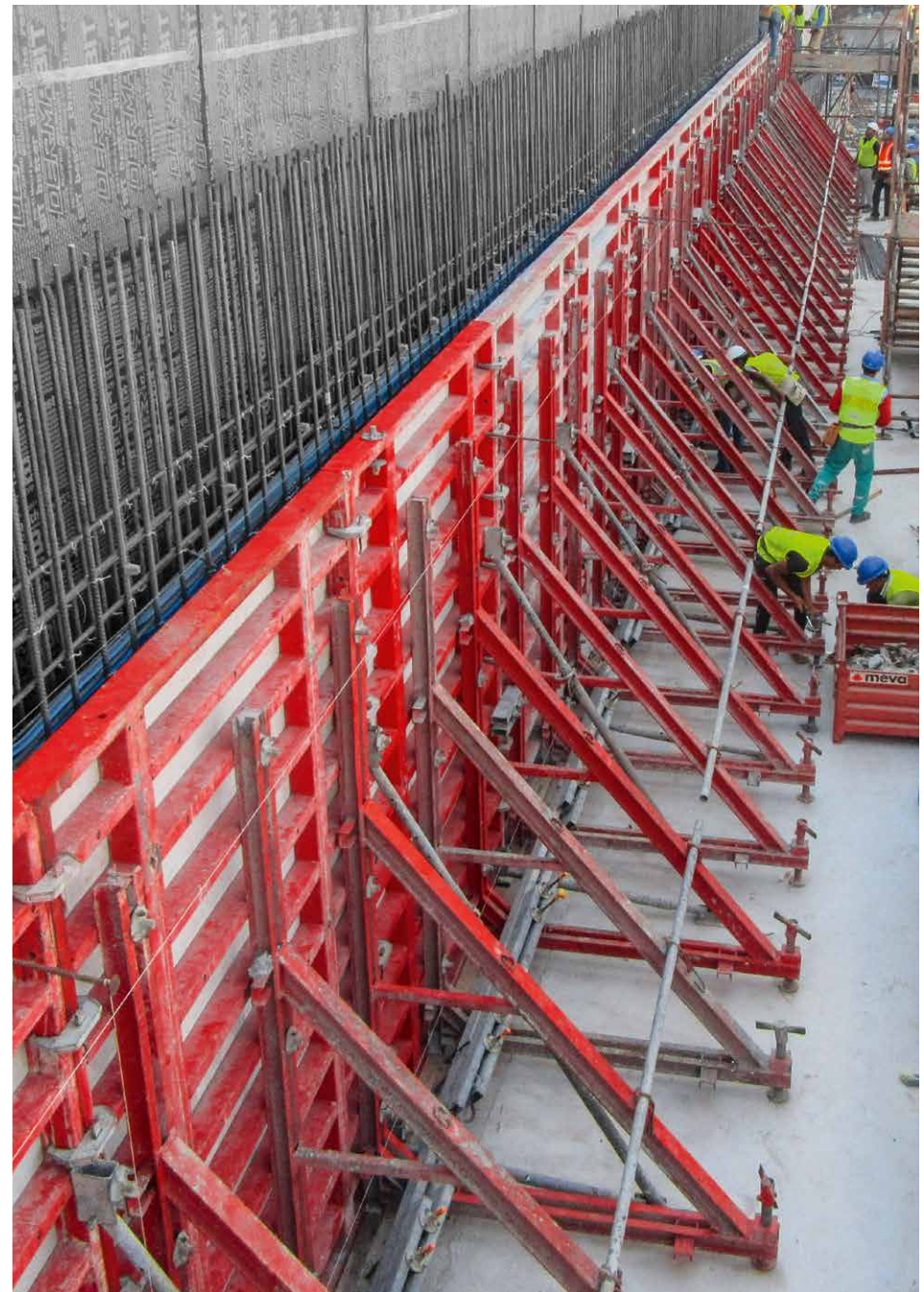
The support frames and brace brackets are mainly used when working up against existing structures such as walls or rock faces where it is only possible to work from one side. The fresh-concrete pressure is transferred to the support frame via the formwork and then into the foundations.



Supporting large loads in restricted spaces.



Supporting single-sided formwork up to a height of 13.50 m.



Brace brackets SK 80 and SK 150

The solution for single-sided bracing up to 150 cm with a great many clever product details. Specially designed for floor slabs and slab edge formwork; adjustable with a spindle up to angles of $\pm 15^\circ$.

STB 300 and STB 300 Plus support frames Support frame STB 450

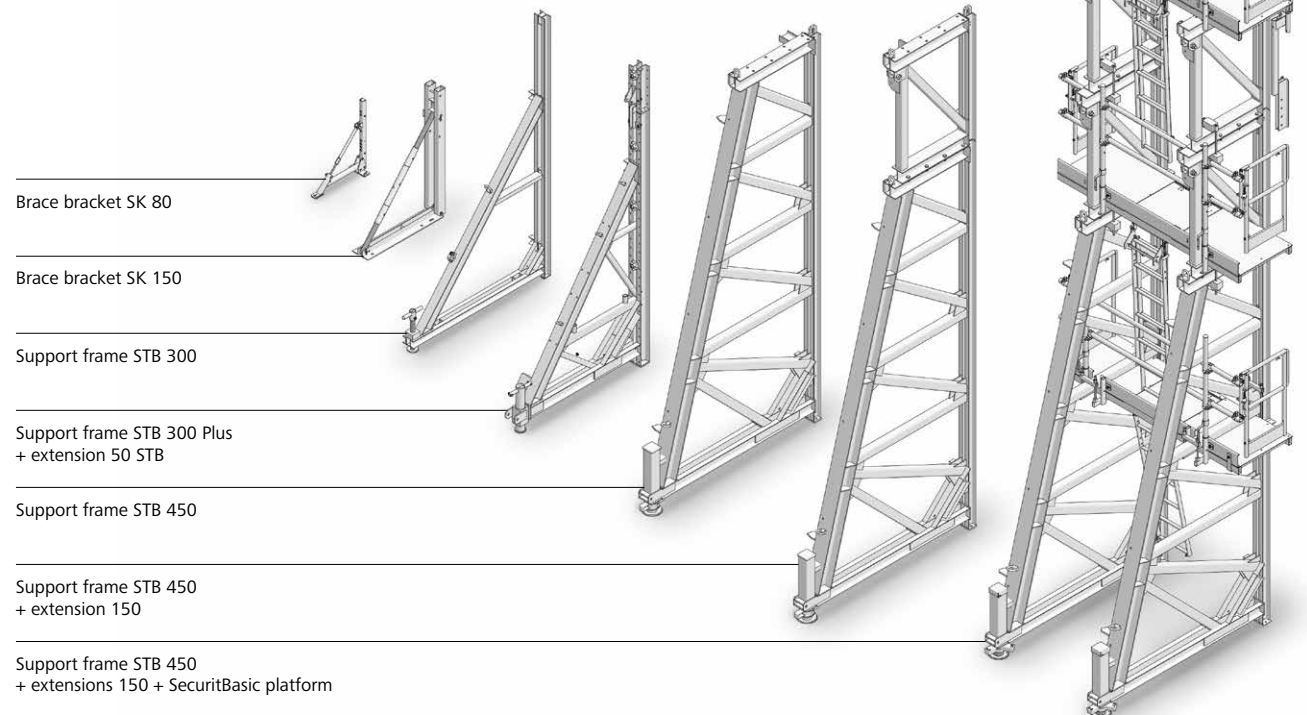
The STB 300 and 300 Plus are stable and economical solutions for single-sided applications with standard or special formwork. Their compact design enables them to be optimally adapted to suit wide-ranging conditions on the construction site.

The STB 450 is ideal when pouring against earth walls and the sides of the temporary construction pit. The use of 1.50 m height extensions enables single-sided walls up to a height of 13.50 m to be formed using the STB 450. The STB 450 is only 2.45 m deep, fits on every truck and can be stored on the construction site in a space-saving manner. It can be easily transported by crane or moved on swivel-type castors.

i

Simply smart

- Robust steel construction with powder coating
- Combinable with all MEVA wall formwork systems, Radius circular formwork or special designs
- Can be used horizontally or vertically
- Anchoring system with DYWIDAG tie rods for a high level of structural safety
- Only 2.45 m deep; fits on every truck and can be stored on the construction site in a space-saving manner
- Modular, rapid height extension with STB height extensions
- High level of work safety when supplemented by SecuritBasic



Triplex

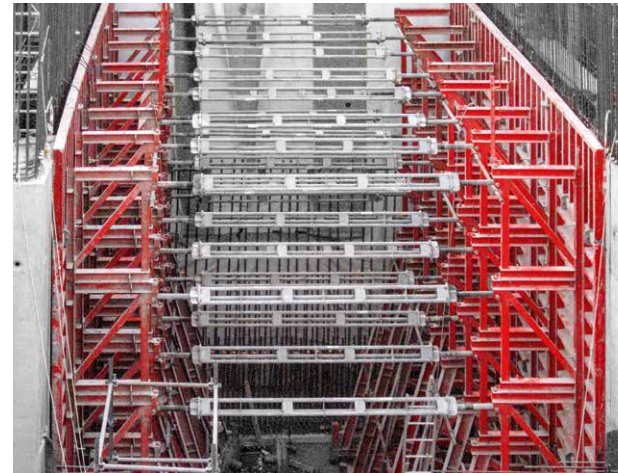
The modular heavy-duty prop

For exceedingly stable bracing

Triplex is the heavy-duty bracing system for high wall and column formwork. It can also be used flexibly for additional horizontal and vertical support applications. Triplex consists of individual assemblies that can be combined on the construction site to produce the required length. Basic elements with lengths 50, 100, 200 and 300 cm are supplemented by foot plates and top units with a spindle which can be precisely adjusted using the left- or right-hand thread.

Triplex is available in two versions:

- **Triplex R**
for use as a push-pull prop. In this application the prop is simply connected by means of a formwork-prop connector for wall and column formwork up to 16.00 m.
- **Triplex SB**
for efficient bracing of the STB support frame up to 13.50 m.





i

Simply smart

- To support and align high wall and column formwork
- Stable and robust for safety at great heights and for efficient bracing of the STB support frame
- Flexibly combinable
- Economical and quick
- Besides being used for bracing, their are also various other possible horizontal and vertical applications



Triplex as support for platforms, overhanging slabs and cantilevered balconies.

Pioneer and trendsetter

More with MEVA

Formwork. Simple. Smart.

A lot of things that are now considered to be standard in the formwork industry were developed by MEVA in Haiterbach. As a trendsetter for the entire industry, we work day in and day out with great élan to make formwork even safer, more efficient and easier to use for the end user. For us, the excellent quality of our products and technology is a matter of course.

We are independent, family-run and committed to the values of a medium-sized company in everything we do. That is why our customers may rightly expect not only technologically superior products but also comprehensive, personal commitment to projects all around the world.

Complex special formwork or economical standard formwork: Our experience and wide range of products make us a service partner with strong consulting skills, even for the sophisticated challenges construction professionals have to master nowadays.

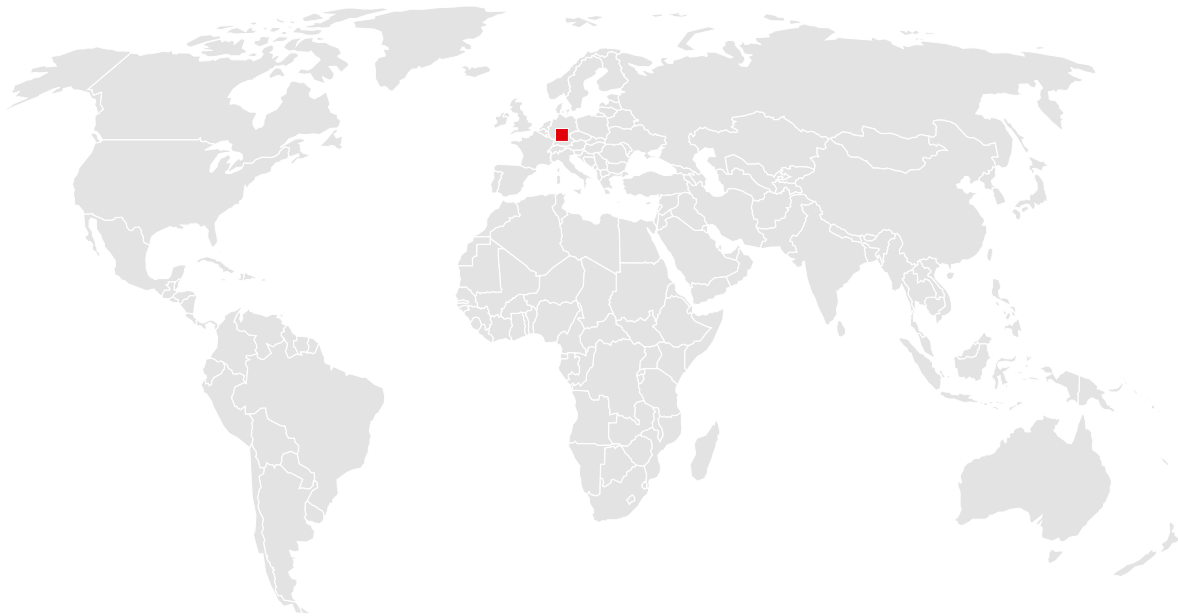
*Formwork.
Simple. Smart.*

▲ meva



You can rely on us wherever you are.

With 40 offices on 5 continents, we are
on the spot wherever you need us.



Headquarters (Germany)

MEVA Schalungs-Systeme GmbH
Industriestrasse 5
D-72221 Haiterbach
Tel. +49 7456 692-01
Fax +49 7456 692-66

info@meva.net
www.meva.net

Subsidiaries/international bases

| | | | |
|-----------------|-----------------------|-----------------|----------------------|
| A-Pfaffstätten | Tel. +43 2252 20900-0 | LATAM | latam@meva.net |
| AUS-Adelaide | Tel. +61 8 82634377 | MA-Casablanca | Tel. +212 684-602243 |
| Benelux, Gouda | Tel. +31 182 570770 | MAL-Perak | Tel. +60 12 5209337 |
| BH-Riffa | Tel. +973 3322 4290 | N-Oslo | Tel. +47 67 154200 |
| CDN-Toronto | Tel. +1 416 8278714 | PA-Panama City | Tel. +507 2372222 |
| CH-Seon | Tel. +41 62 7697100 | PH-Manila | Tel. +63 998 5416975 |
| DK-Køge | Tel. +45 56 311855 | QA-Doha | Tel. +974 4006 8485 |
| F-Sarreguemines | Tel. +33 387 959938 | SGP-Singapore | Tel. +65 67354459 |
| GB-Tamworth | Tel. +44 1827 60217 | UAE-Dubai | Tel. +971 4 3411180 |
| H-Budapest | Tel. +36 1 2722222 | USA-Springfield | Tel. +1 937 3280022 |
| IND-Mumbai | Tel. +91 22 27563430 | | |



MEVA Schalungs-Systeme GmbH

Industriestrasse 5 Tel. +49 7456 692-01
72221 Haiterbach Fax +49 7456 692-66
Germany info@meva.net

www.meva.net