



## Radius, Circo and CaroFalt

Formwork for circular, square and  
rectangular columns and curved shapes



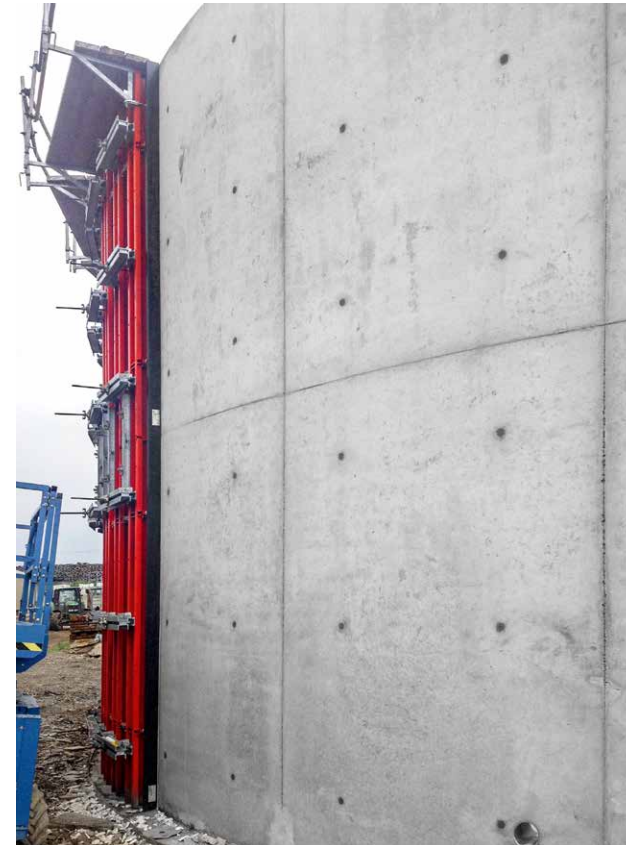
## Radius

# The continuously adjustable circular formwork

For radii from 250 cm

The flexible system for curved walls comprises ready-to-use formwork panels accommodating radii upwards of 250 cm. The integrated spindle system allows continuous on-site adjustment of the panels to the required radius. As a special service provided on request, MEVA employees will ensure precise adjustment of the radii or supply you with factory-built radius templates. Radius is compatible with MEVA's AluStar, StarTec, Mammut 350 and Mammut XT wall formwork systems.

		Panel height [cm]			
		150	300	350	
Width [cm]	Outside panels	250	■	■	■
	125	■	■	■	
Inside panels	240	■	■	■	
	120	■	■	■	





**i**

## Simply smart

- **A top performer**
  - 60 kN/m<sup>2</sup> fresh concrete load capacity
  - For tall elements, high pour speeds and large formwork cycles
- **Compatibility**
  - AluStar
  - StarTec
  - Mammut 350
  - Mammut XT
- **Panel connection with MEVA assembly lock**
  - Fast, trouble-free junctions with straight walls
  - Uniform working method, streamlined logistics
  - Rapid, labour-saving assembly
- **Easy vertical extension with RS alignment rail and M assembly lock**
- **Intelligent MEVA product design**
  - Millimetre-perfect setting of required radii using integrated spindles
  - Coated steel facing
  - Safe, efficient working through use of MEVA accessories

## Radius

# Ingenuity down to the finest detail

### Safe and flexible

MEVA systems excel by their supreme standards of quality, efficiency and practical detailing. And the tried-and-tested Radius circular formwork, with its high-grade, elastically deformable steel facing, is no exception. Radius sections are connected with push-pull spindles. The location of the spindle system between the stiffening sections minimises the depth of the formwork panels and improves their stackability. Vertical joints between panels are formed with the MEVA assembly lock.



**Easy vertical extension**  
with RS alignment rail and  
M assembly lock.



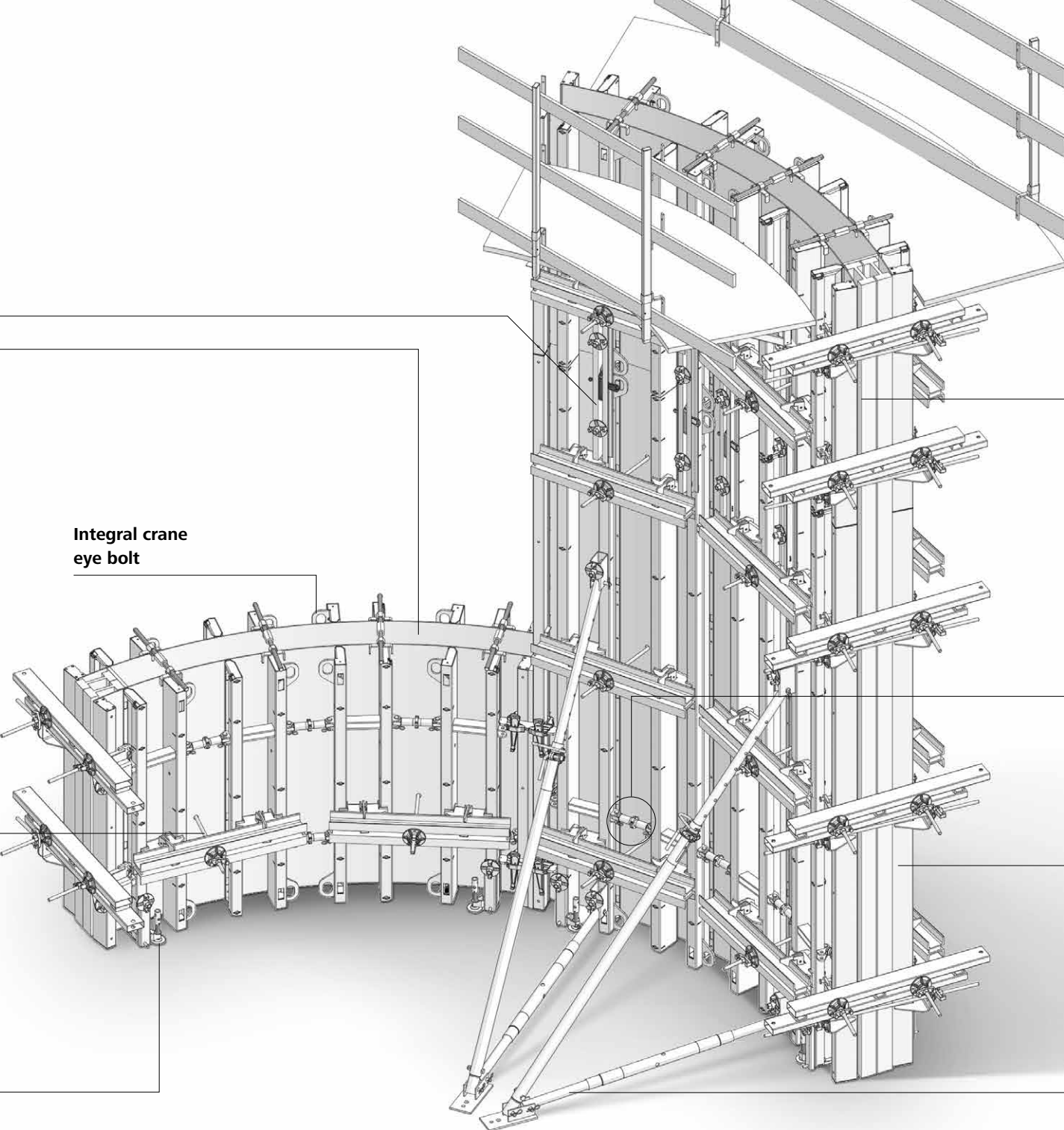
**Box outs**  
Magnets used to attach box  
outs and triangular filllets.



**Straightforward tying**  
using anchor rails that fully  
exploit load capacity of DW 20  
tie rod.



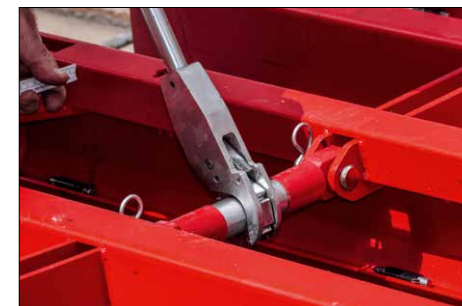
**Simple height adjustment**  
with foot spindle to offset  
uneven base.



Integral crane  
eye bolt



**Specially coated, elastically deformable steel facing**  
to meet even stringent fair-faced concrete requirements.



**Integral spindles**  
Simple, accurate setting of required radii using integrated spindles and ratchet.

**Enhanced corrosion resistance**  
thanks to high-grade powder-coated finish plus additional priming and cavity sealing.

**Straightforward bracing**  
with standard MEVA components.

**Circo**

# Twin semi-circular units for all-round satisfaction

Robust, rigid circular steel column formwork

Circo offers the perfect solution for circular columns, meeting all fair-faced concrete requirements. The steel formwork comprises two identical semi-circular column units. High-grade priming and cavity sealing provide reliable protection against corrosion and facilitate cleaning. Circo formwork can accommodate a maximum fresh concrete pressure of 120 kN/m<sup>2</sup>. It can also be used in conjunction with AluStar, StarTec, Mammut 350 and Mammut XT wall formwork panels to form rounded wall ends.

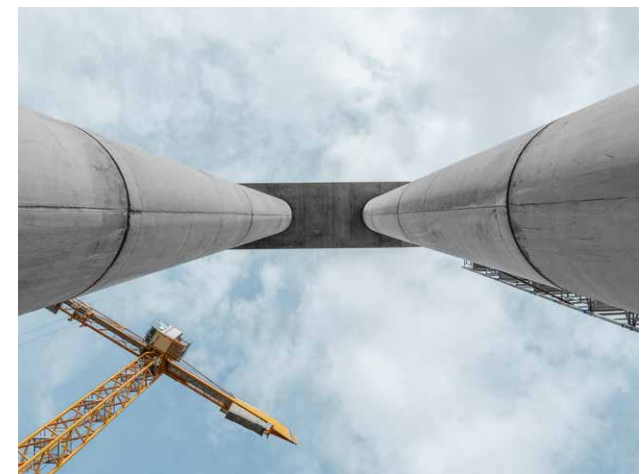
	Unit height [cm]		
	50	100	300
Diameter [cm]			
25	■	■	■
30	■	■	■
35	■	■	■
40	■	■	■
45	■	■	■
50	■	■	■
55	■	■	■
60	■	■	■
65	■	■	■
70	■	■	■
75	■	■	■
80	■	■	■





## Simply smart

- **Optimum column height increments**
  - 3 m tall units with 1 m and 0.5 m extensions to cater for all standard heights in 50 cm increments
  - Diameters in 5 cm increments from 25 to 80 cm
  - High-precision fit for stepless vertical extension
- **Safety thanks to**
  - working platform with integrated access hatch
  - ladder
- **Intelligent MEVA product design**
  - Rapid assembly and connection of semi-circular units with MEVA assembly lock
  - Rounded wall ends
  - Straightforward installation of additional MEVA accessories

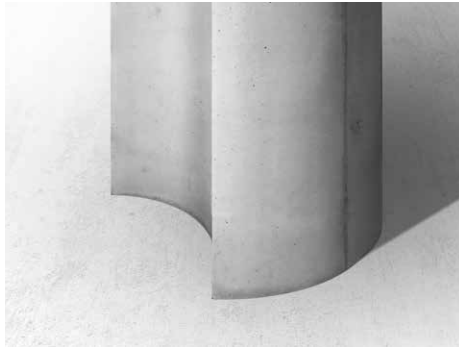


## Circo

# Perfectly formed circular columns

### Versatile application

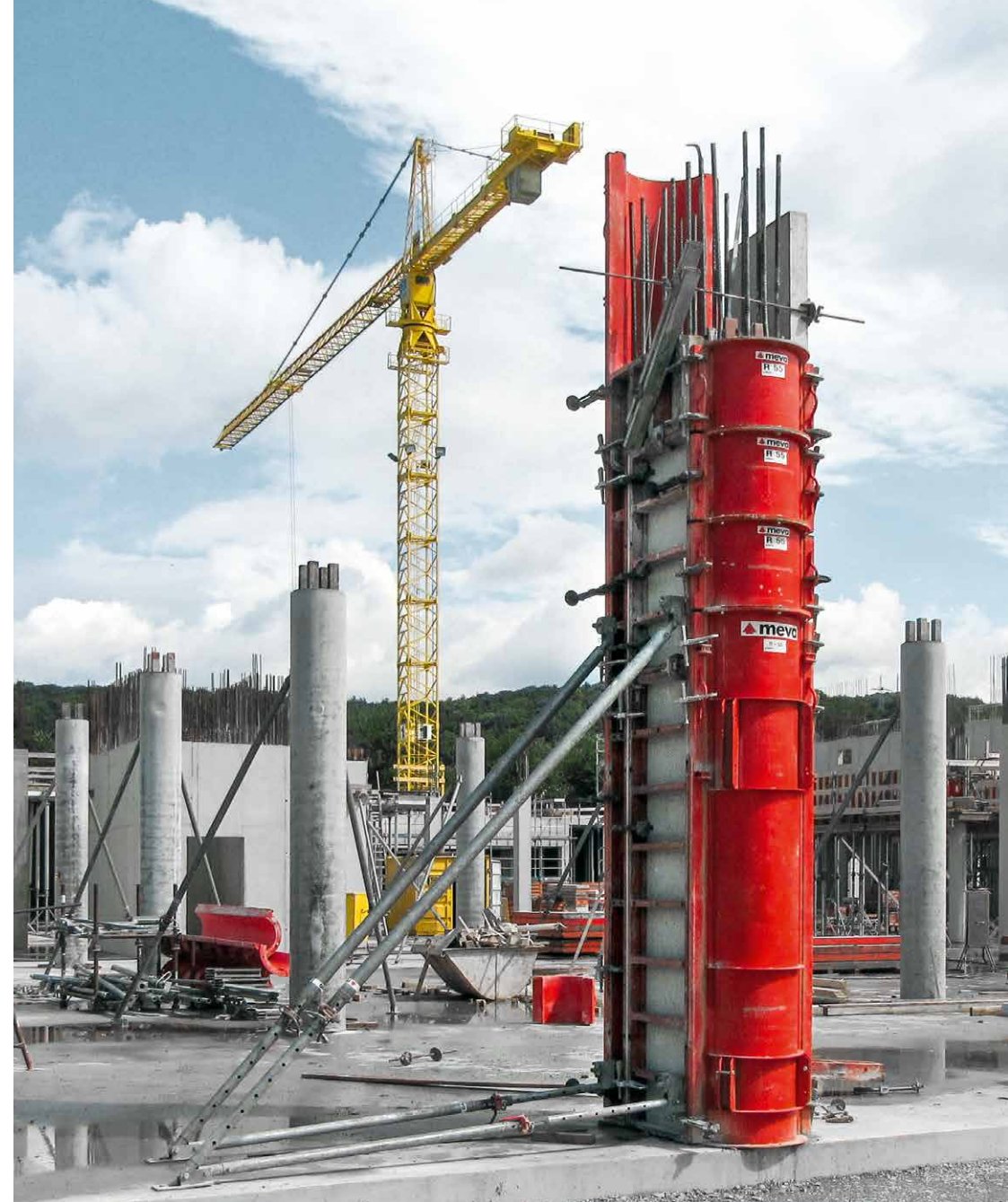
Circular concrete columns combine pragmatic benefits with aesthetic appeal. Architectural concepts for framed buildings or halls, for instance, frequently incorporate circular columns with fair-faced finishes as a design feature. Other typical applications include basement car parks, bridge piers or underground stormwater storage tanks.



Circo in conjunction with special design formwork



Special connection components



**Perfectly aligned vertical extension  
by special connecting flanges  
(turned in pairs)**

**Circo platform**  
for Circo circular column formwork with  
access hatch and foldable side and rear  
protection

**Straightforward installation of  
accessories**

Circo scaffolding bracket

M assembly lock

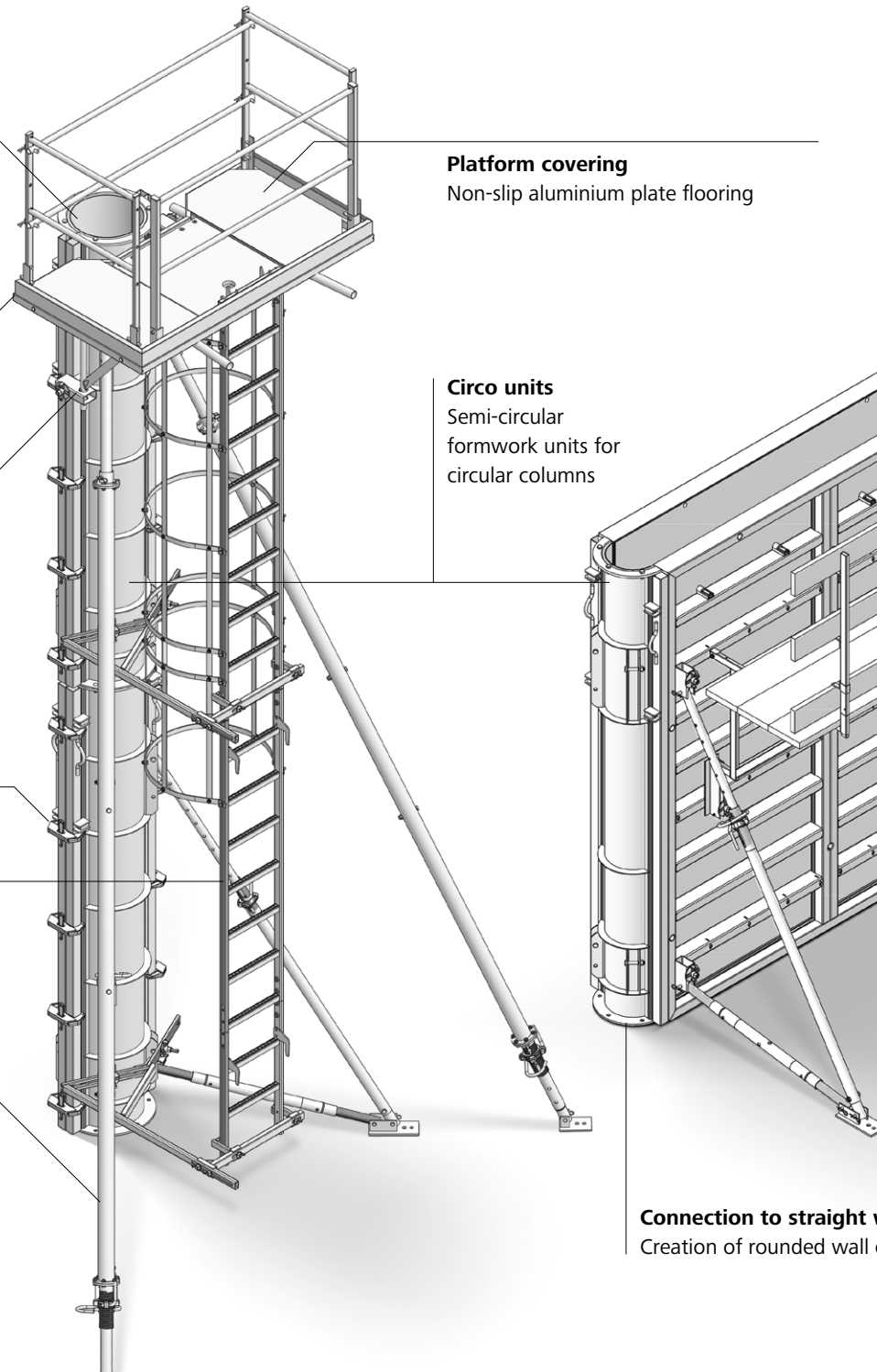
Ladder

Brace frame

**Platform covering**  
Non-slip aluminium plate flooring

**Circo units**  
Semi-circular  
formwork units for  
circular columns

**Connection to straight walls**  
Creation of rounded wall ends



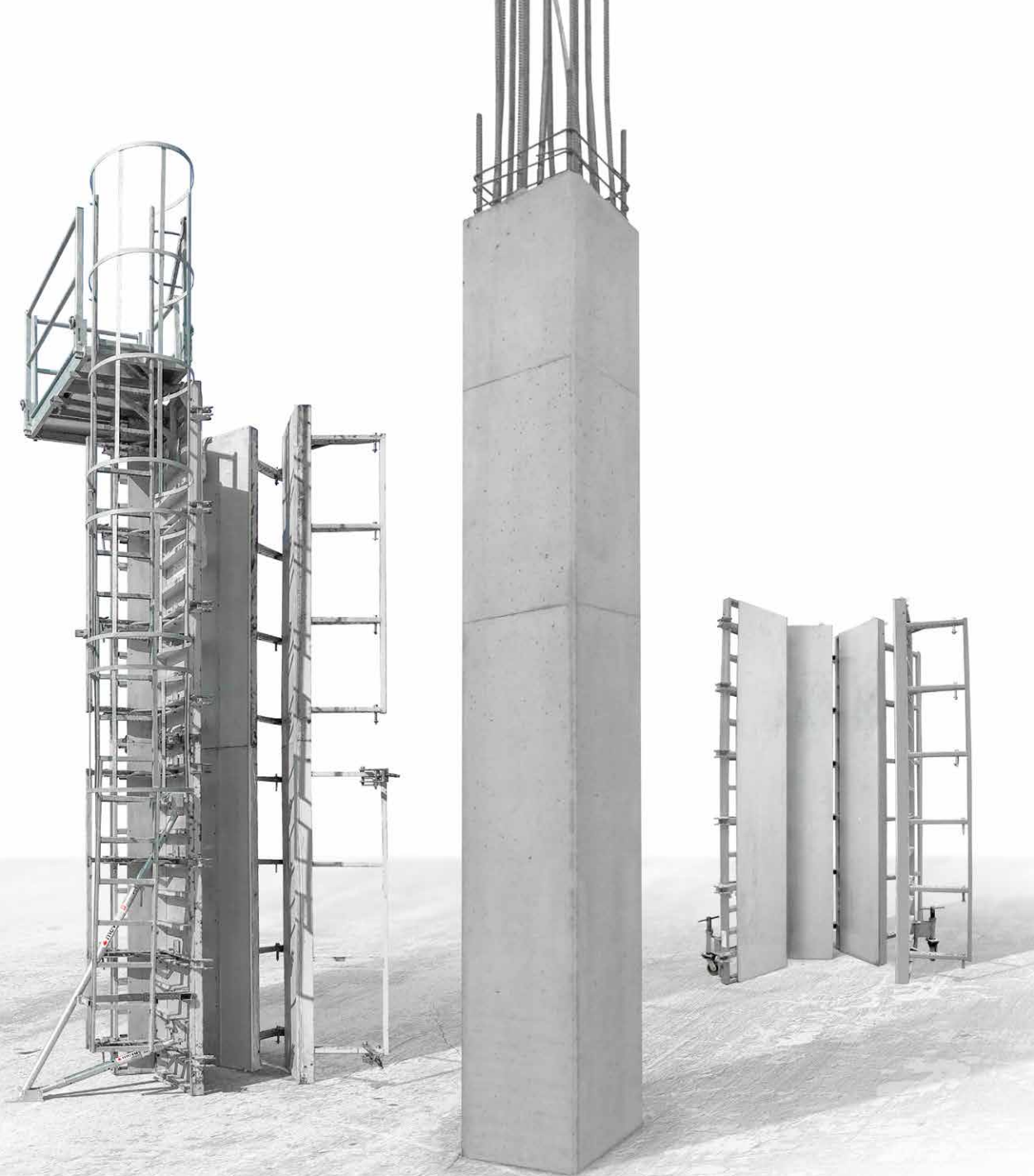
## CaroFalt

# Foldable, wheelable column formwork

Quick and reliable for best results

CaroFalt is a byword for the fast, efficient casting of high-quality columns. The system comprises four identical panels that are hinged together in the manner of windmill sails to allow rapid deployment. The assembled unit can be rolled to the next work location using clip-on castors or lifted to the next storey by crane in a single operation.

	Panel height [cm]	
Standard unit height [cm]	270	360
Bottom extension unit height [cm]	60	120





## Simply smart

- **Optimum size range**
  - Rapid performance of high pours for 20 to 60 cm column cross-sections
  - Square or rectangular column cross-sections, adjustable in 5 cm increments
- **Built-in safety**
  - Working platform
  - Integral access ladder with rear protection
  - Extensions added at bottom to enhance speed and safety of operations
- **Intelligent MEVA product design**
  - alkus all-plastic facing
  - Standard and bottom extension units connected by AS assembly locks
  - Closed hollow frame profile made of steel: structurally robust, hot-dip galvanised with MEVA finish, making it durable and easy-to-clean
  - Easy-to-use CF spanner for fast opening and closing of formwork, even from ladder
  - Rapid panel connection
  - Meeting highest fair-faced concrete requirements
  - Use of standard MEVA accessories
- **Max. 100 kN/m<sup>2</sup> fresh concrete load capacity**

## CaroFalt

# Inspired detailing

### MEVA's hallmark

Drawing on numerous standard MEVA product and quality features, the CaroFalt column formwork concept is a technical tour de force that impresses down to the last detail. While the alkus all-plastic facings deliver fair-faced concrete quality, the column arrises can be additionally chamfered through the incorporation of triangular fillets. The high fresh concrete load capacity of 100 kN/m<sup>2</sup> allows the rapid completion of high vertical pours.



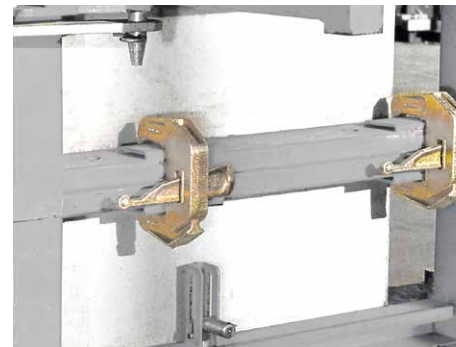
#### Easy relocation

The assembly can be lifted to the next storey by crane in a single operation.



#### Relocation with castors

Clip-on castors allow the easy movement of complete units to the next work location.



#### Simple, time-saving height adjustment

Only one component is needed for rapid, reliable panel connection: the MEVA assembly lock. This allows single-handed fitting and just a few hammer blows suffice to achieve a strong panel connection.



#### CF spanners to change column cross-section

The square or rectangular column cross-section can be adjusted in 5 cm increments using the perforated rail. The CF spanner allows easy opening and closing of the column formwork, even from the ladder.

**Working platform**

Ample working space, supporting loads of up to 200 kg/m<sup>2</sup>, with non-slip aluminium plate flooring

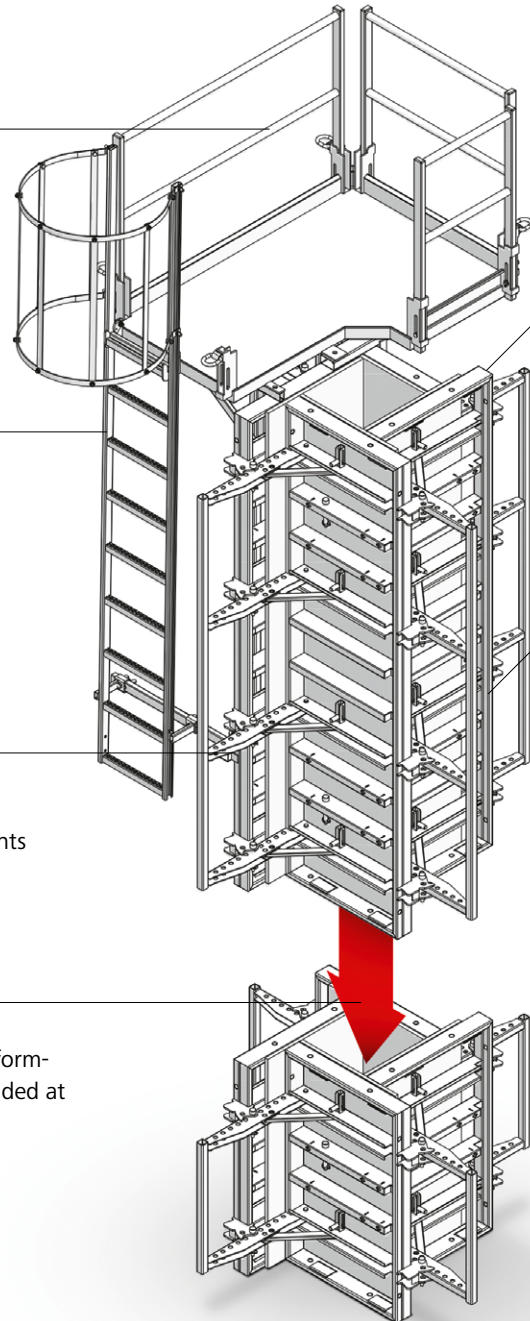
**Integral ladder access with rear protection**

**Perforated rail**

to simplify adjustment of column cross-section in 5 cm increments

**Bottom extension**

for varying pour heights, the column formwork can be easily shortened or extended at the bottom



**Hot-dip galvanised frame**

with surface finish to facilitate cleaning and reduce concrete adhesion

**Closed hollow profile**

for high stability and long service life



**alkus all-plastic facing**

No water absorption. Resistant to swelling and shrinkage. The smooth, robust surface guarantees a high-quality concrete finish, even after heavy use.

## Pioneer and trendsetter

# More with MEVA

Formwork. Simple. Smart.

A lot of things that are now considered to be standard in the formwork industry were developed by MEVA in Haiterbach. As a trendsetter for the entire industry, we work day in and day out with great élan to make formwork even safer, more efficient and easier to use for the end user. For us, the excellent quality of our products and technology is a matter of course.

We are independent, family-run and committed to the values of a medium-sized company in everything we do. That is why our customers may rightly expect not only technologically superior products but also comprehensive, personal commitment to projects all around the world.

Complex special formwork or economical standard formwork: Our experience and wide range of products make us a service partner with strong consulting skills, even for the sophisticated challenges construction professionals have to master nowadays.

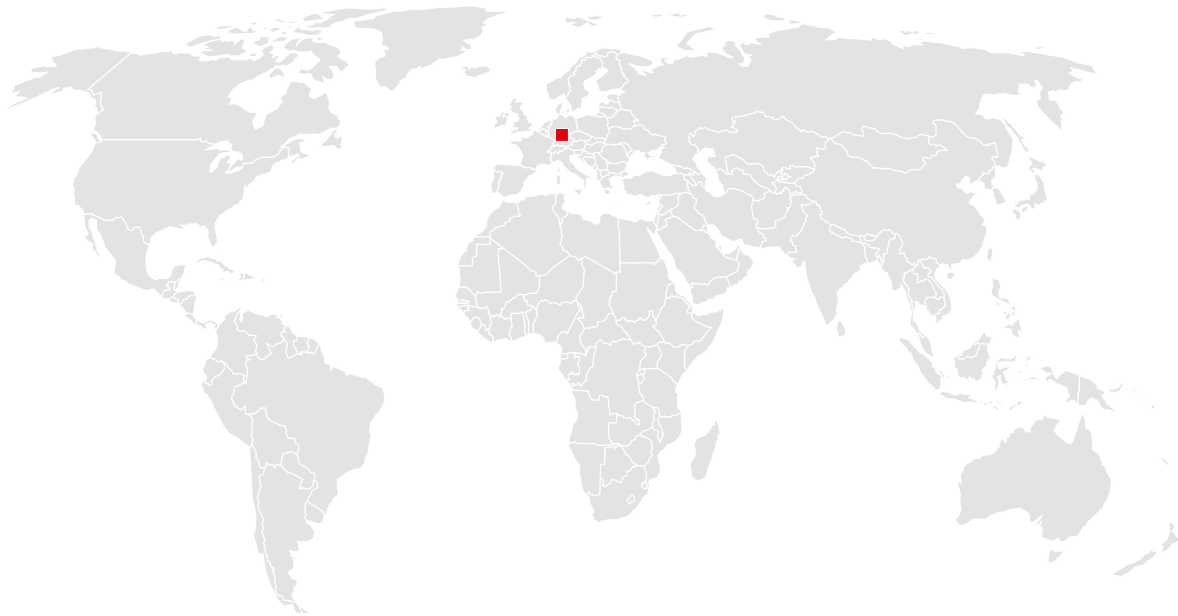
*Formwork.  
Simple. Smart.*

▲ meva



# You can rely on us wherever you are.

With 40 offices on 5 continents, we are  
on the spot wherever you need us.



## Headquarters (Germany)

---

MEVA Schalungs-Systeme GmbH  
Industriestrasse 5  
D-72221 Haiterbach  
Tel. +49 7456 692-01  
Fax +49 7456 692-66

info@meva.net  
www.meva.net

## Subsidiaries/international bases

---

A-Pfaffstätten	Tel. +43 2252 20900-0	LATAM	latam@meva.net
AUS-Adelaide	Tel. +61 8 82634377	MA-Casablanca	Tel. +212 684-602243
Benelux, Gouda	Tel. +31 182 570770	MAL-Perak	Tel. +60 12 5209337
BH-Riffa	Tel. +973 3322 4290	N-Oslo	Tel. +47 67 154200
CDN-Toronto	Tel. +1 416 8278714	PA-Panama City	Tel. +507 2372222
CH-Seon	Tel. +41 62 7697100	PH-Manila	Tel. +63 998 5416975
DK-Køge	Tel. +45 56 311855	QA-Doha	Tel. +974 4006 8485
F-Sarreguemines	Tel. +33 387 959938	SA-Dammam	Tel. +966 582 144144
GB-Tamworth	Tel. +44 1827 60217	SGP-Singapore	Tel. +65 67354459
H-Budapest	Tel. +36 1 2722222	UAE-Dubai	Tel. +971 4 3411180
IND-Mumbai	Tel. +91 22 27563430	USA-Springfield	Tel. +1 937 3280022



### MEVA Schalungs-Systeme GmbH

Industriestrasse 5      Tel. +49 7456 692-01  
72221 Haiterbach      Fax +49 7456 692-66  
Germany                  info@meva.net

[www.meva.net](http://www.meva.net)