

# Wall formwork

## Product list

### Please note

This product list includes all parts necessary for most applications. For parts required for special applications, please refer to the MEVA price list. Dimensions are in centimetres (cm) unless another measure is shown.

## Contents

Articulated flange nut 15/120.....	56	Panel height 2.40 m.....	45
AS alignment rail .....	54	Panel height 3.00 m.....	44
Brace frame 250 .....	58	Plastic tube .....	55
Cone for plastic tube .....	56	Plug D20 .....	54
Crane hook.....	58	Push-pull strut .....	57
Dismantling auxiliary 120.....	53	RS-assembly lock .....	52
Drive nut 60.....	57	Safety plug AS/ST stacks, black .....	62
EA assembly lock .....	51	Scaffold tube .....	61
EA compensation plate.....	53	Side railing.....	60
EA steel filler.....	52	Spanner SW 27.....	56
EcoAs .....	44	Stop end bracket .....	53
EcoAs AL 350/90 CP .....	48	Stop end fixture 23/40.....	54
EcoAs AL-IC .....	49	Swivel-joint coupler 48/48 .....	62
EcoAs AL MPP .....	49	Tensioner EA for foundation tape .....	47
EcoAs HIC .....	50	Tension screw M350/EA.....	49
EcoAs HOC .....	51	Tie claw 23 .....	57
EcoAs OC .....	50	Tie rod DW 15/90 .....	55
Flange nut 100 .....	56	Tie rod holder .....	55
Flange screw.....	52	Tie wrench DW15/DW20 .....	55
Formwork-prop connector.....	59	Tilting bracket 23.....	61
Foundation tape .....	47	Timber fixture .....	54
Guard-railing post.....	60	Transport angle 10.....	62
Guard-railing post 48.....	61	Trolley for foundation tape .....	47
Panel height 0.80 m.....	47	Uni-assembly lock .....	51
Panel height 1.20 m.....	46	Walkway bracket.....	59
Panel height 1.60 m.....	46		

# Wall formwork

## EcoAs

Galvanized and post-treated. Frame profile height 10 cm, frame profile width 23 mm. Three tie holes per panel heights 300 cm and 240 cm, two tie holes per panel heights 160 cm and 120 cm. Heights 240 cm, 160 cm and 120 cm: centered tie hole at the top and bottom for horizontal application. The frames of EA panels are made of closed steel profiles and are torsion proof. The EcoAs is optionally covered with an alkus board or a multi-layer wood board (birch ply BP). All around grooves and EA assembly locks guarantee a tight and perfectly aligned stepless panel connection. Conical anchor sleeves are weld into the frames. Multi function profiles allow for an easy, fast and safe attachment of accessories..

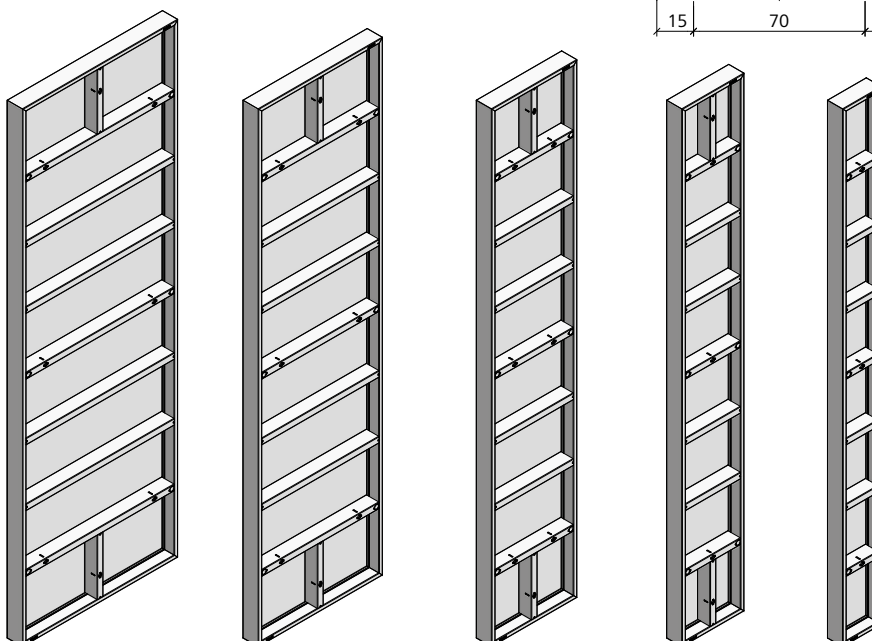
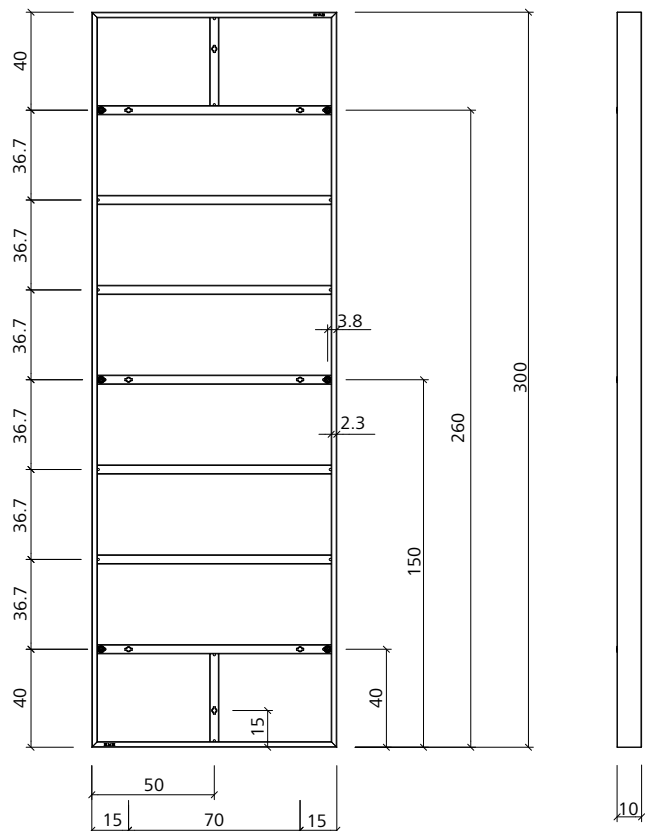
## Panel height 3.00 m

7 cross stiffeners, of which 5 are multi-function profiles (weld-in nuts with Dywidag thread). 3 tie holes per panel height (2 additional multi-function profiles with tie holes at the top and bottom for horizontal application for bottom slabs).

### Important

Tie holes that are not used must always be closed with plastic plug D20.

Ref.-No.	Description / Application	m <sup>2</sup>	kg
21-703-11	EcoAs AL.....300/100	3.00	101.5
21-703-21	EcoAs AL.....300/ 80	2.40	86.0
21-703-46	EcoAs AL.....300/ 55	1.65	68.5
21-703-61	EcoAs AL.....300/ 40	1.20	55.0
21-703-76	EcoAs AL.....300/ 25	0.75	41.0
21-703-10	EcoAs BP.....300/100	3.00	95.0
21-703-20	EcoAs BP.....300/80	2.40	81.5
21-703-45	EcoAs BP.....300/55	1.65	65.0
21-703-60	EcoAs BP.....300/40	1.20	52.0
21-703-75	EcoAs BP.....300/25	0.75	39.5



Wall formwork

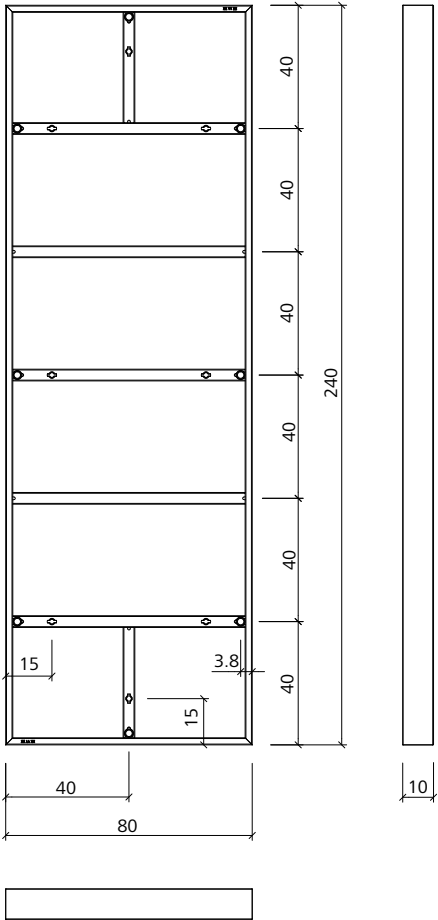
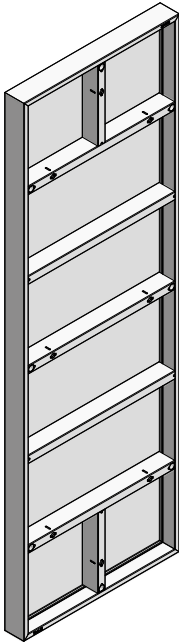
Panel height 2.40 m

5 cross stiffeners, of which 3 are multi-function profiles (weld-in nuts with Dywidag thread). 3 tie holes per panel height (2 additional multi-function profiles with tie holes at the top and bottom for horizontal application for bottom slabs).

**Important**

Tie holes that are not used must always be closed with plastic plug D20.

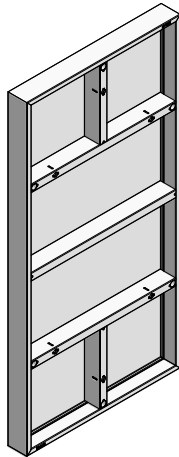
Ref.-No.	Description / Application	m <sup>2</sup>	kg
21-700-21	EcoAs AL.....240/ 80	1.92	68.0
21-700-46	EcoAs AL.....240/ 55	1.32	53.5
21-700-51	EcoAs AL.....240/ 50	1.20	51.0
21-700-56	EcoAs AL.....240/ 45	1.08	48.0
21-700-61	EcoAs AL.....240/ 40	0.96	40.5
21-700-76	EcoAs AL.....240/ 25	0.60	32.0



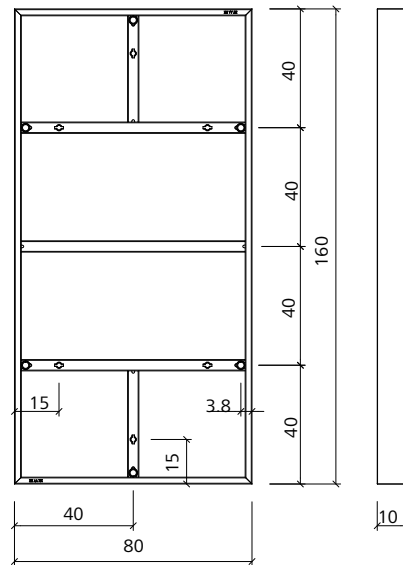
# Wall formwork

## Panel height 1.60 m

3 cross stiffeners, of which 2 are multi-function profiles (weld-in nuts with Dywidag thread). 2 tie holes per panel height (2 additional tie holes at the top and bottom for horizontal application for bottom slabs).

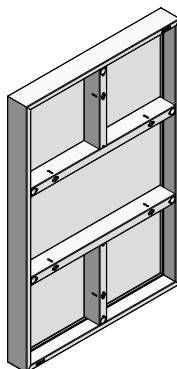


Ref.-No.	Description / Application	m <sup>2</sup>	kg
21-705-21	EcoAs AL..... 160/ 80	1.28	47.0
21-705-46	EcoAs AL..... 160/ 55	0.88	37.0
21-705-51	EcoAs AL..... 160/ 50	0.80	36.0
21-705-56	EcoAs AL..... 160/ 45	0.72	33.5
21-705-61	EcoAs AL..... 160/ 40	0.64	27.5
21-705-76	EcoAs AL..... 160/ 25	0.40	21.5

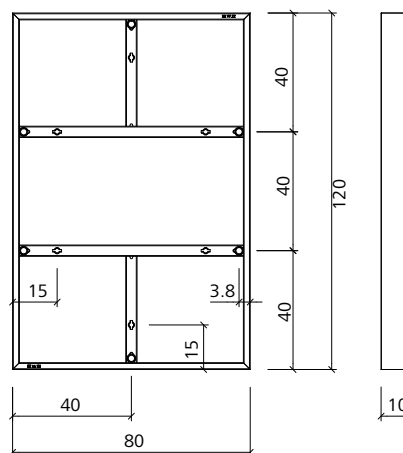


## Panel height 1.20 m

2 cross stiffeners, both are multi-function profiles (weld-in nuts with Dywidag thread). 2 tie holes per panel height (2 additional tie holes at the top and bottom for horizontal application for bottom slabs).



Ref.-No.	Description / Application	m <sup>2</sup>	kg
21-710-21	EcoAs AL..... 120/ 80	0.96	37.0
21-710-46	EcoAs AL..... 120/ 55	0.66	30.0
21-710-51	EcoAs AL..... 120/ 50	0.60	28.5
21-710-56	EcoAs AL..... 120/ 45	0.54	27.0
21-710-61	EcoAs AL..... 120/ 40	0.48	21.0
21-710-71	EcoAs AL..... 120/ 30	0.36	18.0
21-710-76	EcoAs AL..... 120/ 25	0.30	16.5



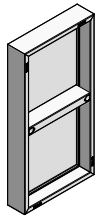
**Important**

Tie holes that are not used must always be closed with plastic plug D20.

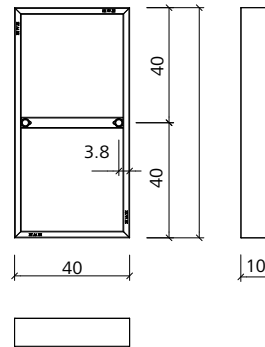
# Wall formwork

## Panel height 0.80 m

1 cross stiffeners is multi-function profiles (weld-in nuts with Dywidag thread). 2 tie holes per panel height .

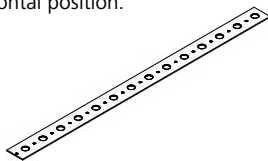


Ref.-No.	Description / Application	m <sup>2</sup>	kg
21-715-61	EcoAs AL..... 80/ 40	0.32	15.0

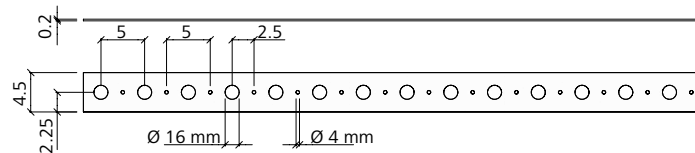


## Foundation tape

Galvanized. Hole spacing 50 mm, hole Ø 16 mm, length 50 m. Adm. tractive force 10 kN. To be cut at hole center. Serves together with the appropriate tensioner as bottom anchoring when assembling panels in horizontal position.

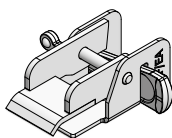


Ref.-No.	Description / Application	m <sup>2</sup>	kg
29-307-50	Foundation tape 50 m.....		20.0

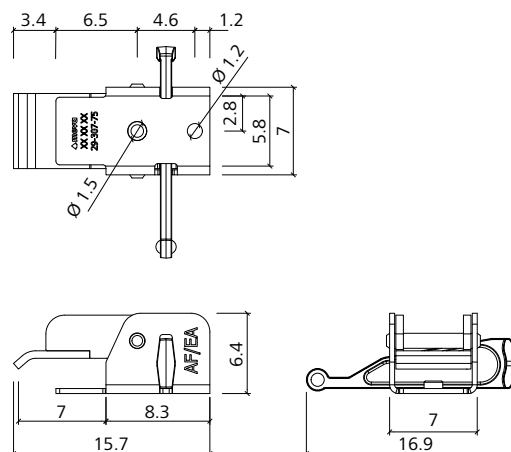


## Tensioner EA for foundation tape

Galvanized. Connects the foundation tape to EcoAs or AluFix panels and serves as bottom anchoring when assembling panels in horizontal position. Two tensioners are required per anchoring position.



Ref.-No.	Description / Application	m <sup>2</sup>	kg
29-307-75	Tensioner EA for foundation tape.....		1.3



## Trolley for foundation tape

Not shown. Galvanized. Is used to transport and cut the foundation tape to length. Suitable for one roll. Pneumatic wheels.

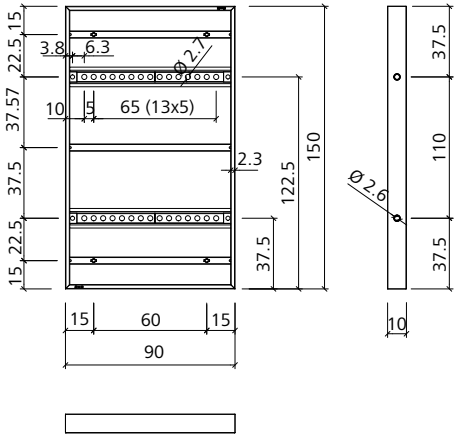
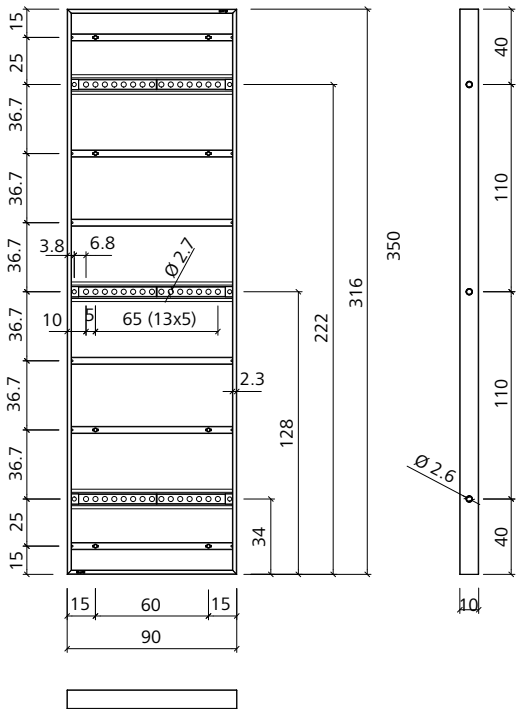
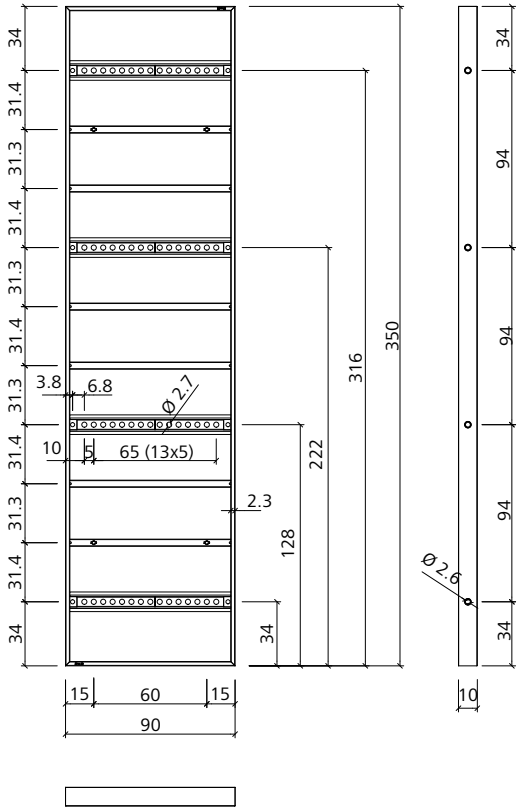
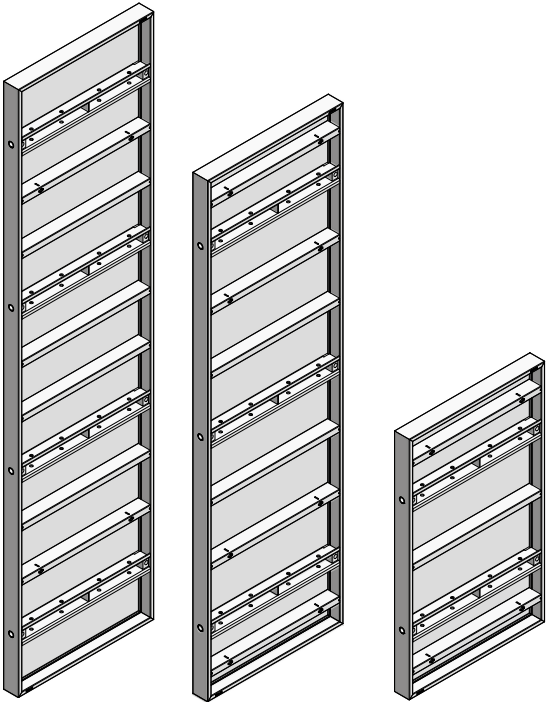
Ref.-No.	Description / Application	m <sup>2</sup>	kg
29-307-55	Trolley for foundation tape.....		21.8

Wall formwork

EcoAs AL 350/90 CP

Column panel, steel, galvanized. Four tie holes per panel heights 350, three tie holes per panel heights 300 cm and two tie holes per panel heights 150 cm with unperforated alkus facing. Equipped with perforated profiles for tensioning screws M350/EA. Can be used for column formwork up to 75 cm (adjustment in 5 cm increments) and for pilasters, connections to existing walls, hinged corners, etc.

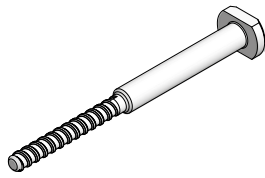
Ref.-No.	Description / Application	m <sup>2</sup>	kg
21-704-86	EcoAs AL 350/90 CP	3.15	133.1
21-704-91	EcoAs AL 300/90 CP	2.70	115.1
21-704-96	EcoAs AL 150/90 CP	1.35	65.8
21-704-85	EcoAs BP 350/90 CP	3.15	129.6
21-704-90	EcoAs BP 300/90 CP	2.70	112.1
21-704-95	EcoAs BP 150/90 CP	1.35	64.3



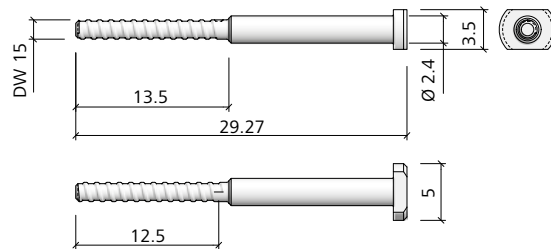
# Wall formwork

## Tension screw M350/EA

Galvanized. Connects column panels.  
A flange nut 100 or an articulated flange nut 15/120 is also required.

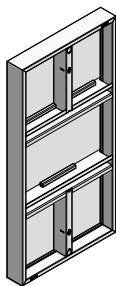


Ref.-No.	Description / Application	m <sup>2</sup>	kg
29-402-98	Tension screw M350/EA	0.9	

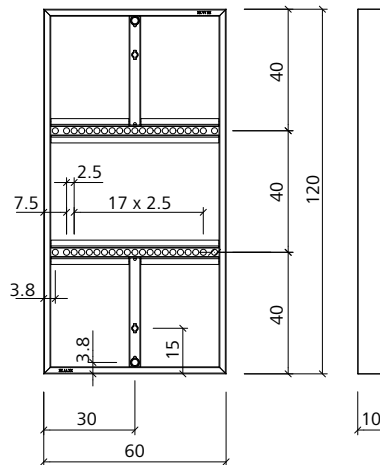


## EcoAs AL MPP

EA-multipurpose panel with perforated profiles to be used as column formwork or to concrete pilasters, stop ends, connections to existing walls, corner configurations, etc. Is used in connection with stop end fixture 23/40.



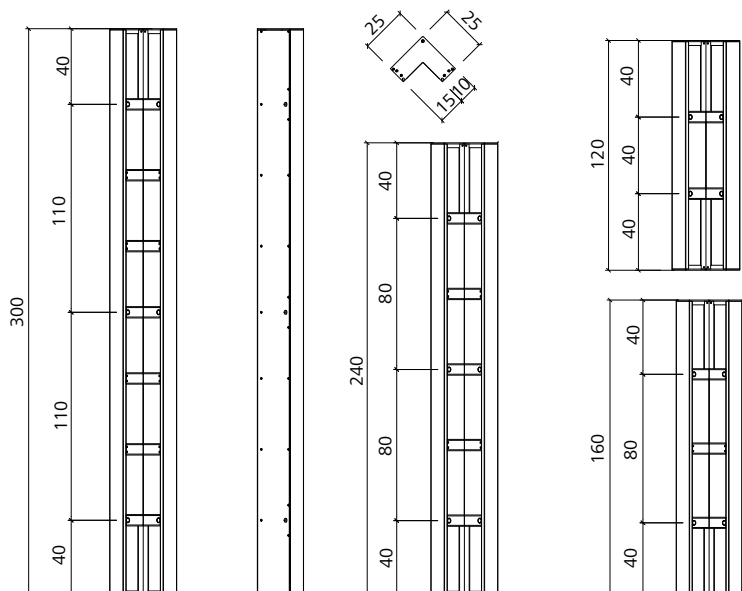
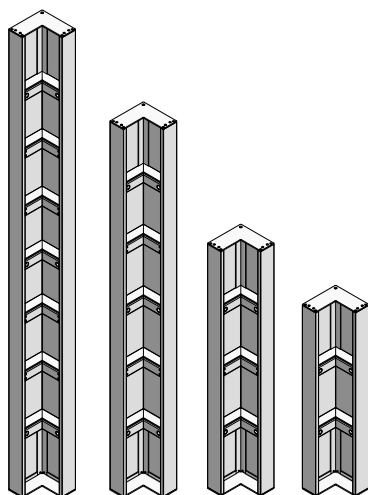
Ref.-No.	Description / Application	m <sup>2</sup>	kg
21-720-51	EcoAs AL-MPP	120/60	0.72



## EcoAs AL-IC

EA inside corner Alu(minium) frame with high-quality annealed plastic coating. All-plastic facing. Aluminium frame with tie holes. For 90° corners, side length 25 cm.

Ref.-No.	Description / Application	m <sup>2</sup>	kg
21-724-10	EcoAs AL-IC	300/25	1.50
21-724-20	EcoAs AL-IC	240/25	1.20
21-724-30	EcoAs AL-IC	160/25	0.80
21-724-40	EcoAs AL-IC	120/25	0.60

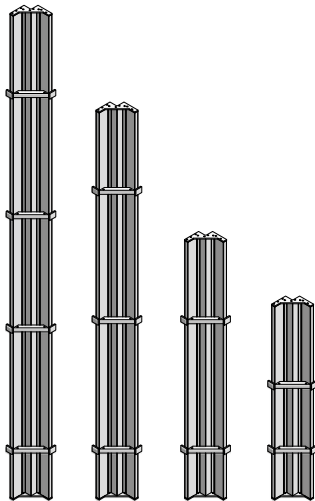


# Wall formwork

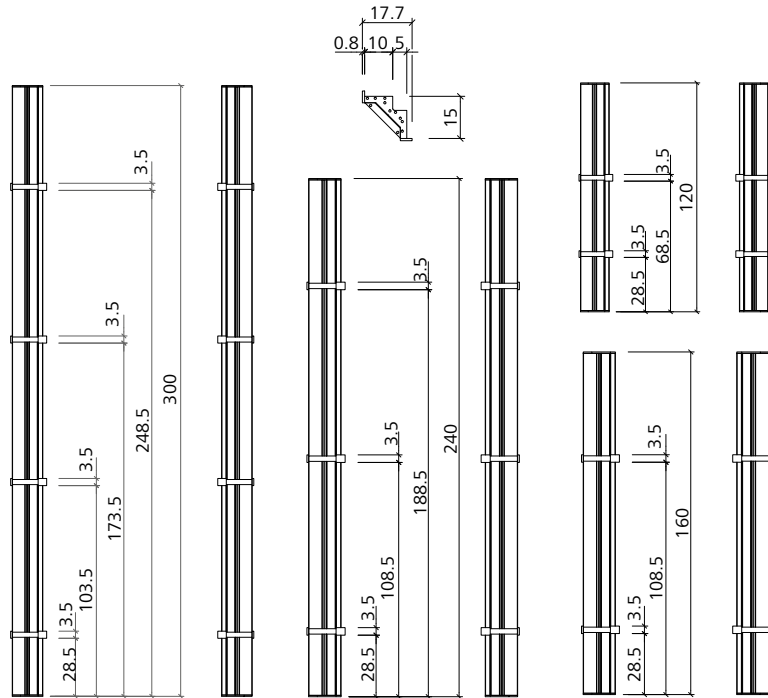
## EcoAs

### EcoAs OC

EA outside corner, Aluminium with high-quality annealed plastic coating. Facing 5 cm wide on both sides, integrated chamfer strip. Provides together with EA panels and EA assembly locks a fast and tight outside corner assembly for 90° angles.

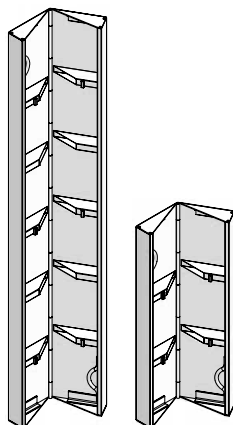


Ref.-No.	Description / Application	m <sup>2</sup>	kg
21-725-75	EcoAs OC ..... 300	0.30	15.6
21-725-85	EcoAs OC ..... 240	0.24	13.0
21-725-90	EcoAs OC ..... 160	0.16	9.0
21-725-95	EcoAs OC ..... 120	0.12	6.5

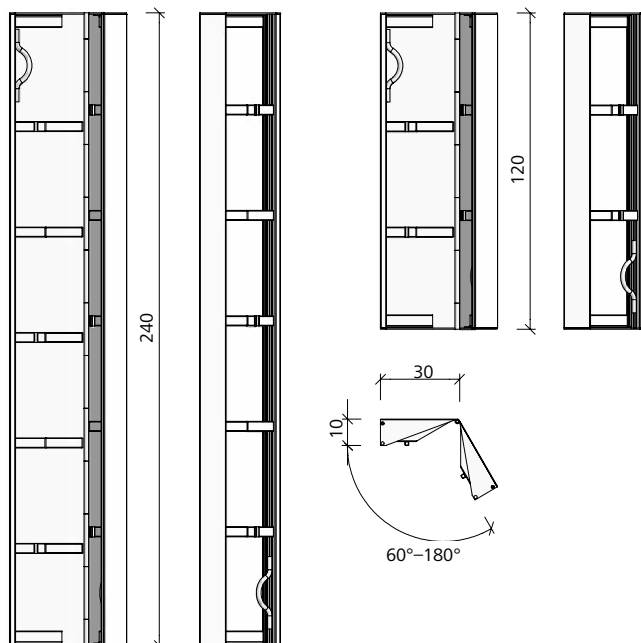


### EcoAs HIC

EA hinged inside corner, steel construction with steel sheeting, primed and cavity-sealed. Side length 30 cm. Adjustable angle 60° to 180°.



Ref.-No.	Description / Application	m <sup>2</sup>	kg
21-726-30	EcoAs HIC ..... 240/30	1.44	57.0
21-726-40	EcoAs HIC ..... 120/30	0.72	29.0

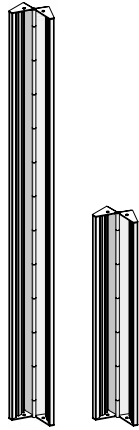


# Wall formwork

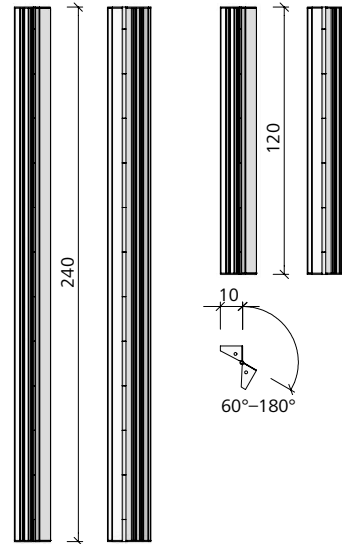
## EcoAs

### EcoAs HOC

EA hinged outside corner, steel construction with steel sheeting, primed and cavity-sealed. Side length 7.5 cm. Adjustable angle 60° to 180°.

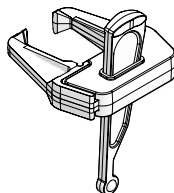


Ref.-No.	Description / Application	m <sup>2</sup>	kg
21-726-50	EcoAs HOC..... 240	0.36	40.0
21-726-60	EcoAs HOC..... 120	0.18	20.2

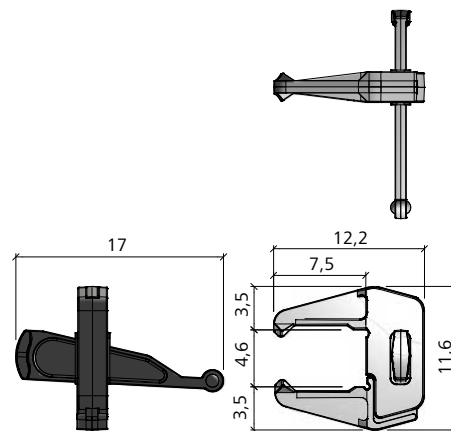


### EA assembly lock

Galvanized. Tightly connects and aligns EA panels. Clamping length 4.6 cm.

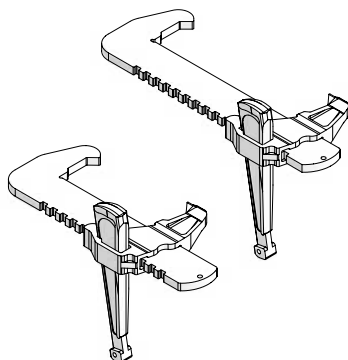


Ref.-No.	Description / Application	m <sup>2</sup>	kg
29-205-50	EA-assembly lock.....		1.5

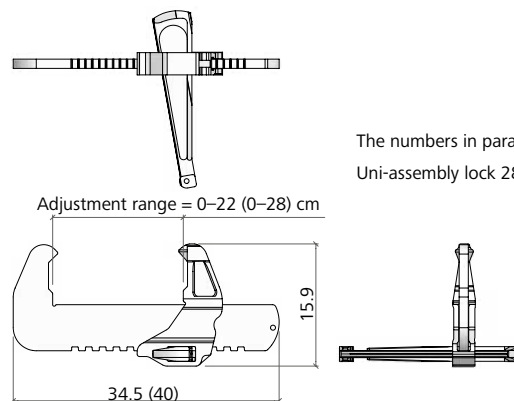


### Uni-assembly lock

Galvanized. For stepless compensation. Clamping length 22 cm or 28 cm.



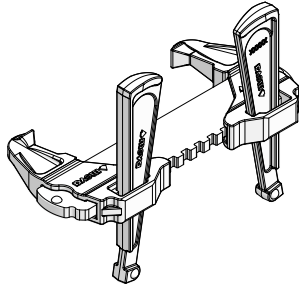
Ref.-No.	Description / Application	m <sup>2</sup>	kg
29-400-85	Uni-assembly lock 22 .....		3.6
29-400-90	Uni-assembly lock 28 .....		3.9



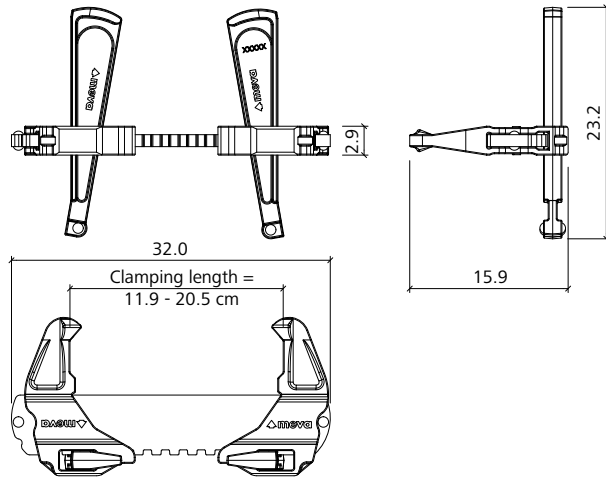
# Wall formwork

## RS-assembly lock

Galvanized, For stepless length compensation. Clamping length is 11.9 to 20.5 cm for stepless compensation.

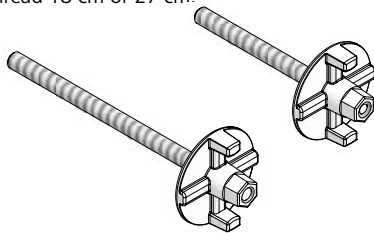


Ref.-No.	Description / Application	m <sup>2</sup>	kg
23-807-70	..... RS-assembly lock.....		4.7

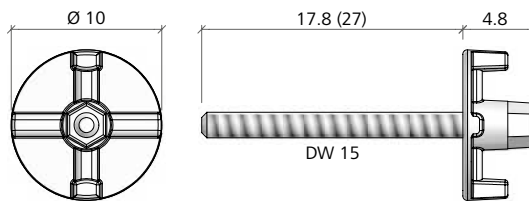


## Flange screw

Galvanized. DW thread Ø 15 mm. Is used to attach accessories, e.g. alignment rails, brace frames, push-pull props, etc. Length of thread 18 cm or 27 cm.



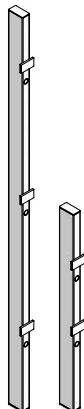
Ref.-No.	Description / Application	m <sup>2</sup>	kg
29-401-10	..... Flange screw 18.....		1.1
29-401-12	..... Flange screw 28.....		1.2



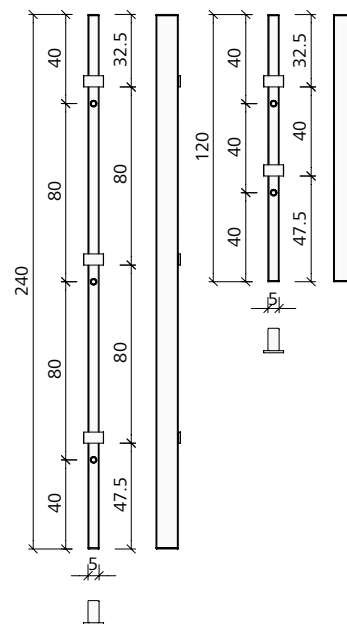
The numbers in parantheses refer to Flange screw 28

## EA steel filler

Completely made of steel, primed and cavity-sealed, with tie holes. For length adjustment of 5 cm, particularly in corners. For the required quantity of Uni-assembly locks see Technical Instruction Manual EcoAs.



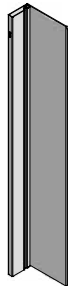
Ref.-No.	Description / Application	m <sup>2</sup>	kg
21-726-00	..... EA-steel filler 240/5.....	0.12	13.0



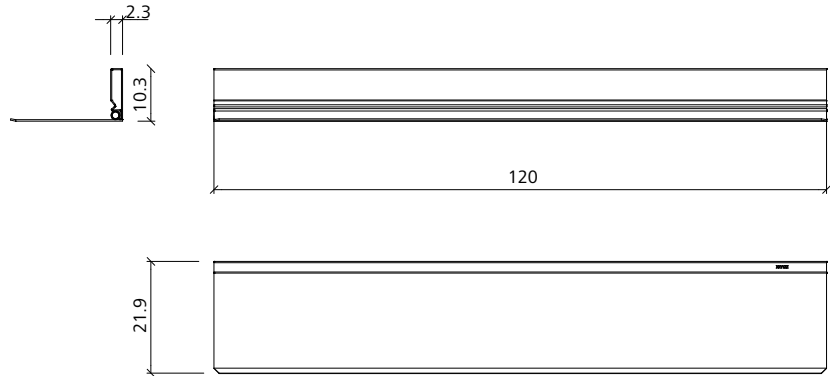
# Wall formwork

## EA compensation plate

Steel construction with steel sheeting, primed and cavity-sealed. Is used to compensate gaps of 6 to 20 cm and attached to panels with 2 EA assembly locks. Alignment rails must be used to bridge and align the panels with the compensation plate.



Ref.-No.	Description / Application	m <sup>2</sup>	kg
21-726-10	EA-steel filler 120/5	0.06	6.5
21-726-20	EA-compensation plate 120/20	0.24	11.8

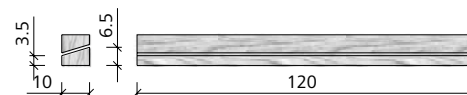


## Dismantling auxiliary 120

10 cm wide, 120 cm high. Diagonally divided timber filler. Permits easy stripping in restricted areas such as shafts and staircases. Two Uni-assembly locks are required per dismantling auxiliary. Alignment rails must be used for reinforcement. Delivery and weight by pairs.

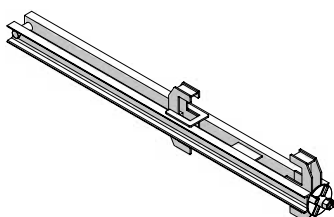


Ref.-No.	Description / Application	m <sup>2</sup>	kg
29-306-20	Dismantling auxiliary 120	7.2	
29-105-45	Stop end bracket 23/40	12.2	

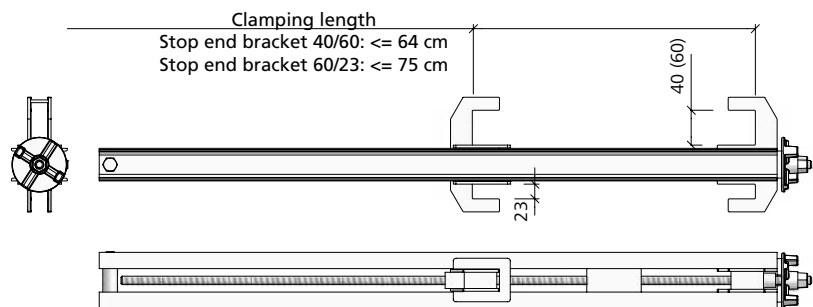


## Stop end bracket

Galvanized. Is used to form stop ends. Stop end bracket 40/60 for wall thickness up to 40 cm and profile widths of 40 and 60 mm. Stop end bracket 2.5' - 60/23 for wall thickness up to 75 cm (2.5') and profile widths of 23 mm (EcoAs) and 60 mm.



Ref.-No.	Description / Application	m <sup>2</sup>	kg
29-105-60	Stop end bracket 2.5' - 60/23	20.0	

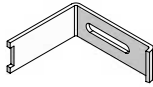


The numbers in brackets refer to top end bracket 2,5' - 60/23

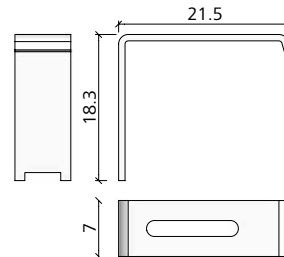
# Wall formwork

## Timber fixture

Galvanized. Is used to attach 10 to 12 cm high squared timbers when bracing panel joints for crane ganging or when bridging problem areas.

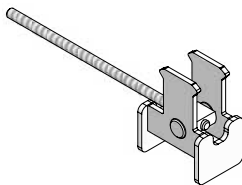


Ref.-No.	Description / Application	m <sup>2</sup>	kg
29-105-90	Timber fixture		1.5

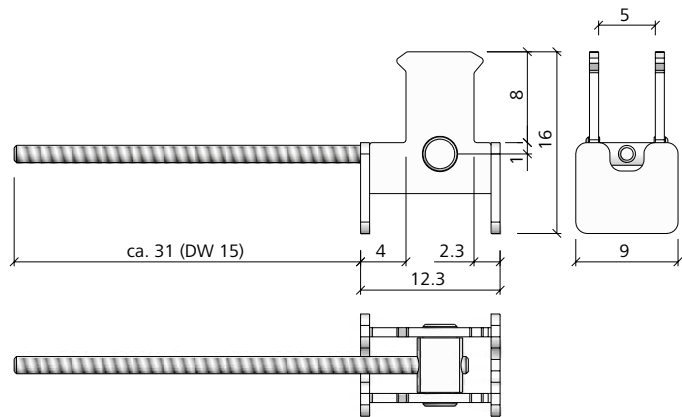


## Stop end fixture 23/40

Yellow chromated. Is used together with the EcoAs or StarTec multi-purpose panel to form outside corners and abutments. Is suited for the frame profiles of EcoAs and AluFix (23 mm) and AluStar/StarTec (40 mm). A flange nut 100 or an articulated flange nut 15/120 is also required.



Ref.-No.	Description / Application	m <sup>2</sup>	kg
29-402-85	Stop end fixture 23/40 (yellow)		3.0



## Plug D20

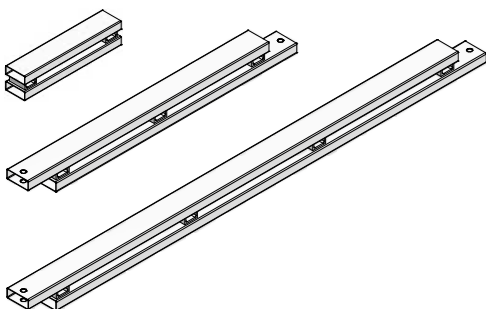
Is used to close unused tie holes (AluFix, EcoAs, AluStar and StarTec).



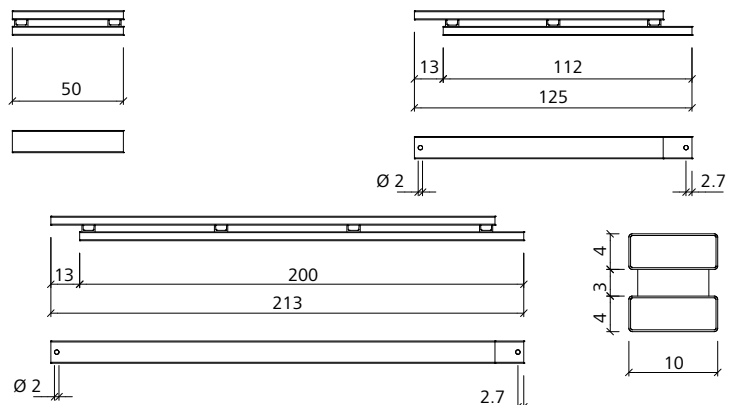
Ref.-No.	Description / Application	m <sup>2</sup>	kg
29-902-63	Plug D20		0.2
29-902-62	Plug D20 without imprint		0.2

## AS alignment rail

Galvanized. Is used to brace panel joints for crane ganging, bridge problem areas and brace compensation areas. Is attached to the formwork with flange screws.



Ref.-No.	Description / Application	m <sup>2</sup>	kg
29-201-73	AS-alignment rail 50, galv.		5.2
29-201-75	AS-alignment rail 125, galv.		10.5
29-201-80	AS-alignment rail 200, galv.		19.0

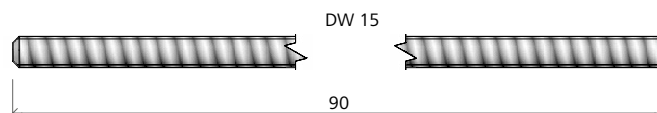


# Wall formwork

## Tie rod DW 15/90

Uncoated, not weldable. DW thread  
 Ø 15 mm. Is used to tie panels of dou-  
 ble-sided formwork. Adm. load capacity 90 kN  
 (DIN 18216).

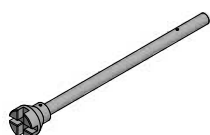
Ref.-No.	Description / Application	m <sup>2</sup>	kg
29-900-80	Tie rod DW 15/90		1.3



## Tie wrench DW15/DW20

Made of steel, galvanized. Used to screw  
 in, screw out and hold tie rods DW15 and  
 DW20; length 400 mm.

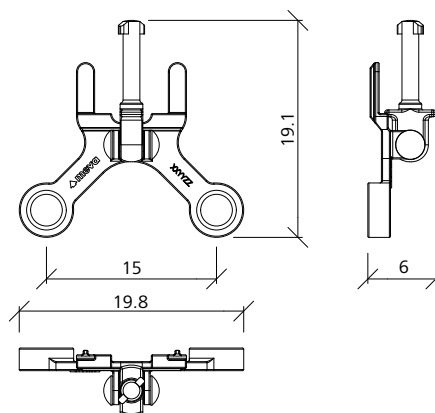
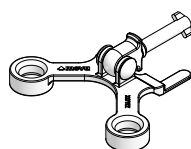
Ref.-No.	Description / Application	m <sup>2</sup>	kg
29-901-39	Tie wrench DW15/DW20		4.5



## Tie rod holder

Galvanized. To hold DW tie rods with articu-  
 lated flange nut, XT tie rods or XT taper ties.  
 Can be used with horizontal or vertical MEVA  
 wall formwork panels.

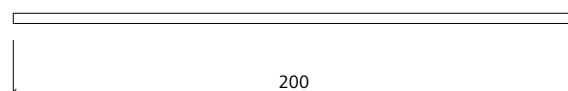
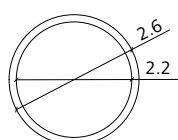
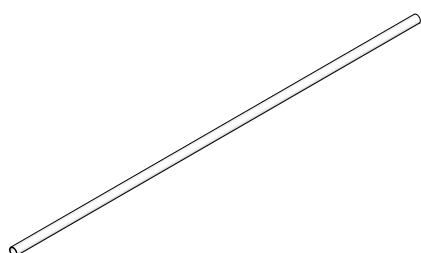
Ref.-No.	Description / Application	m <sup>2</sup>	kg
29-927-05	Tie rod fixture Ø35		1.2



## Plastic tube

Plastic spacer tube for tie holes. Two cones  
 are also required per tie hole. D22/200: inter-  
 nal Ø 22 mm, external Ø 28 mm, standard  
 length 2.00 m. D32/36: internal Ø 32 mm,  
 external Ø 36 mm, standard length 2.00 m.

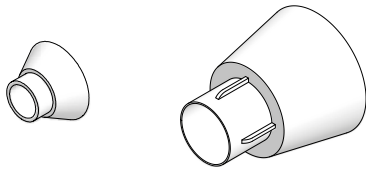
Ref.-No.	Description / Application	m <sup>2</sup>	kg
29-902-30	Plastic tube D22/200		8.8



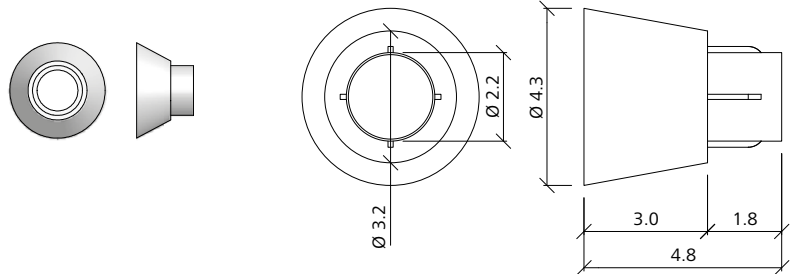
Wall formwork

**Cone for plastic tube**

Available with 10 mm or 30 mm covering.

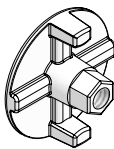


Ref.-No.	Description / Application	m <sup>2</sup>	kg
29-902-40	..... Cone for plastic tube D22/10 (10 mm covering)	.....	13.0
29-902-50	..... Cone for plastic tube D22/30 (30 mm covering)	.....	3.3

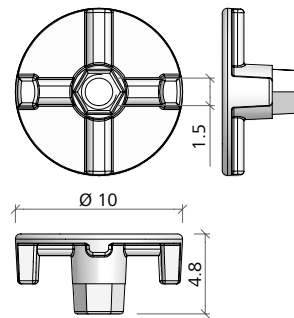


**Flange nut 100**

Forged, galvanized. For DW tie rods with 15 mm Ø. Plate Ø 100 mm, SW 27. Admissible load capacity 90 kN (DIN 18216).

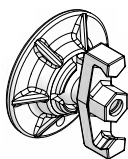


Ref.-No.	Description / Application	m <sup>2</sup>	kg
29-900-20	..... Flange nut 100 (SW 27, forged)	.....	0.7

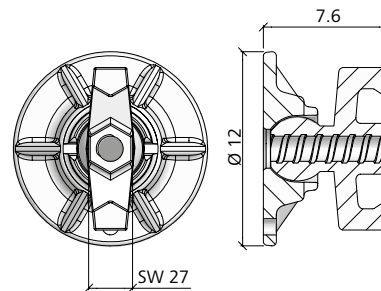


**Articulated flange nut 15/120**

Forged, galvanized. DIN 18216. DW thread Ø 15 mm, plate Ø 120 mm, max. inclination 10°, SW 27. Max. load capacity 90 kN. Reduces wear of panel coating.

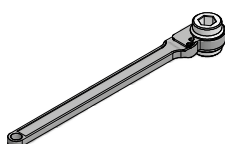


Ref.-No.	Description / Application	m <sup>2</sup>	kg
29-900-10	..... Articulated flange nut 15/120 (SW 27)	.....	1.8

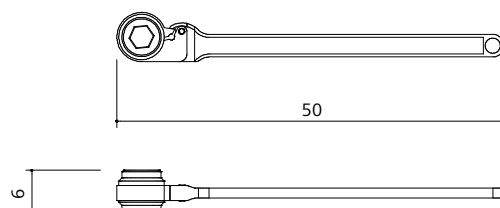


**Spanner SW 27**

Inset yellow chromated. Spanner width (SW) 27 mm. Is used to tighten and loosen flange nuts 100, articulated flange nuts 15/120 and flange screws.



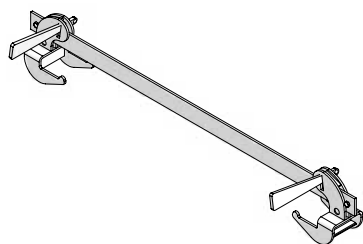
Ref.-No.	Description / Application	m <sup>2</sup>	kg
29-800-10	..... Spanner SW 27	.....	1.8



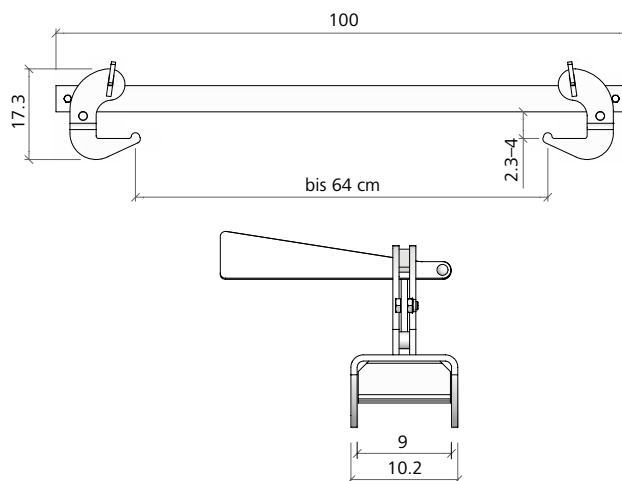
# Wall formwork

## Push-pull strut

Galvanized, torsion-proof. Is attached above a panel joint and replaces top tie of horizontal panels for a wall or slab thickness up to 64 cm (AluFix and EcoAs) and 60 cm (StarTec and AluStar).



Ref.-No.	Description / Application	m <sup>2</sup>	kg
29-105-70	..... Push-pull strut.....		6.6

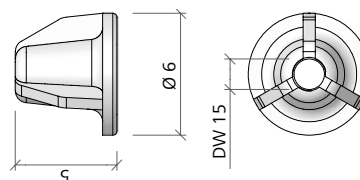


## Drive nut 60

Galvanized. DW thread  $\varnothing$  15 mm, plate  $\varnothing$  60 mm. Adm. load capacity 90 kN (DIN 18216). Is used to tie the formwork to the ground or to a wall connection.

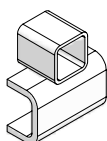


Ref.-No.	Description / Application	m <sup>2</sup>	kg
29-900-23	..... Drive nut 60.....		0.5

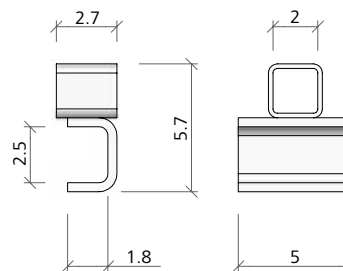


## Tie claw 23

Galvanized. Permits tying (with tie rod DW 15 and flange nut 100) directly above or beside EcoAs and AluFix panels.



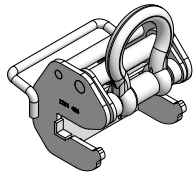
Ref.-No.	Description / Application	m <sup>2</sup>	kg
29-901-44	..... Tie claw 23.....		0.2



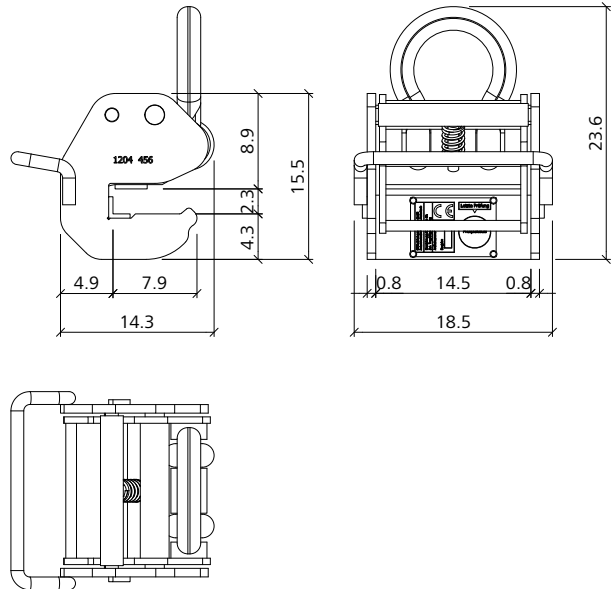
# Wall formwork

## Crane hook

Coated. Is used to move and crane-gang AluFix and EcoAs panels. Self-locking. Load capacity 6 kN (600 kg). Always two crane hooks required per gang. Refer to the crane hook Operating Instructions for application and safety test.

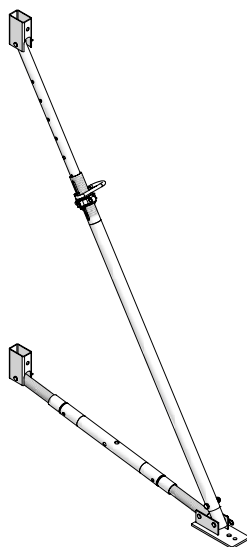


Ref.-No.	Description / Application	m <sup>2</sup>	kg
29-103-05	EA/AF-crane hook		6.0

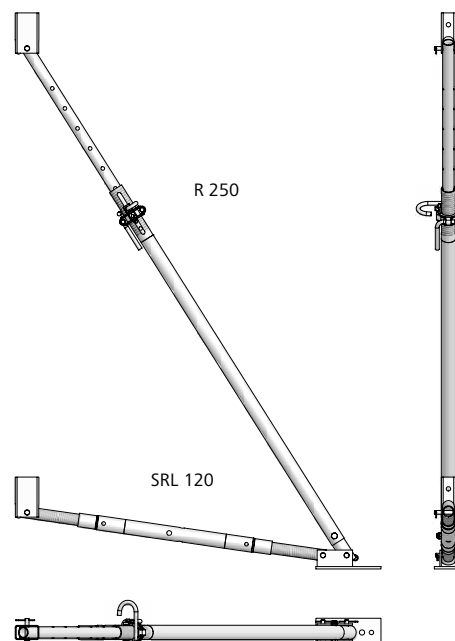


## Brace frame 250

Galvanized. Available with formwork-prop connector. Is used to align and brace the formwork. Consists of a push-pull prop R 250 (190-320 cm), a brace SRL 120 (90-150 cm) and a double-jointed footplate. The formwork-prop connectors are attached to the formwork with flange screws 18.



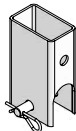
Ref.-No.	Description / Application	m <sup>2</sup>	kg
29-109-20	Brace frame 250 with formwork-prop connector		31.5



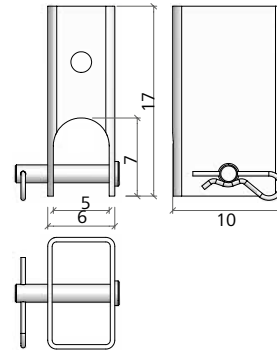
# Wall formwork

## Formwork-prop connector

Galvanized. Delivery includes head bolt 16/90 and cotter pin 4. Is used to connect braces, brace frames and push-pull props (max. Ø 48 mm) to the multi-function profile with a flange screw 18.

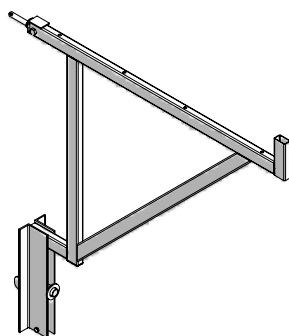


Ref.-No.	Description / Application	m <sup>2</sup>	kg
29-804-85	Formwork-prop connector		1.7

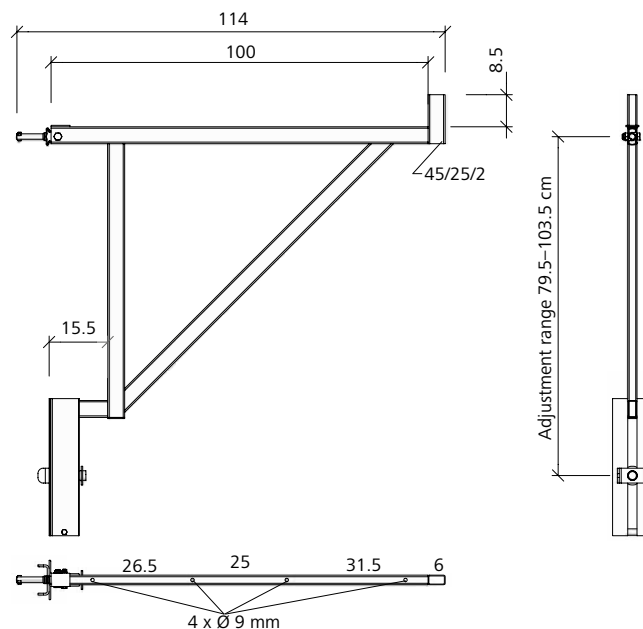


## Walkway bracket

Galvanized, yellow, pluggable. Is used as working and safety scaffold. Is attached to the multi-function profile and secured to the multi-function profile below with a flange screw 18. The planking can be mounted to the brackets. Working width approx. 90 cm. MEVA Guard-railing post is also required. Bracket spacing depends on type of planking (DIN 4420).



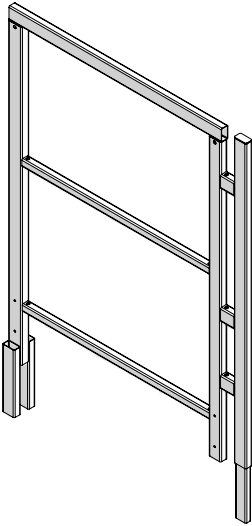
Ref.-No.	Description / Application	m <sup>2</sup>	kg
29-106-00	Walkway bracket 90 (yellow), galv.		10.3



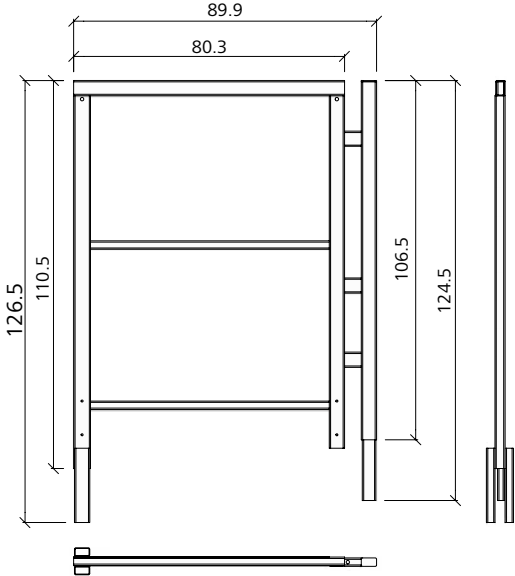
Wall formwork

**Side railing**

Galvanized. Is plugged into the walkway bracket.

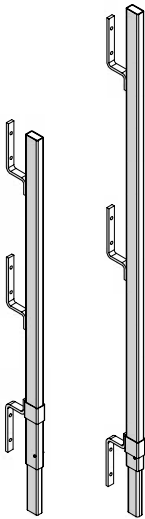


Ref.-No.	Description / Application	m <sup>2</sup>	kg
29-108-20	Side railing 90/100, galv.	12.3	

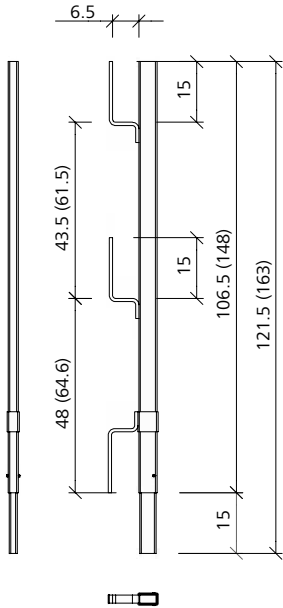


**Guard-railing post**

Galvanized. Is plugged into the walkway bracket.



Ref.-No.	Description / Application	m <sup>2</sup>	kg
29-106-75	Guard-railing post 100	3.7	
29-106-85	Guard-railing post 140	4.7	

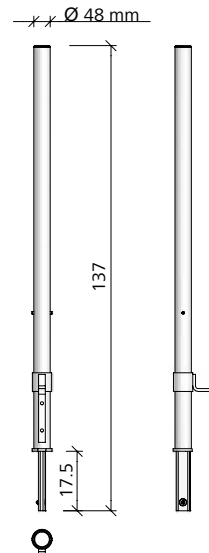


The numbers in parentheses refer to the Guard-railing post 140

# Wall formwork

## Guard-railing post 48

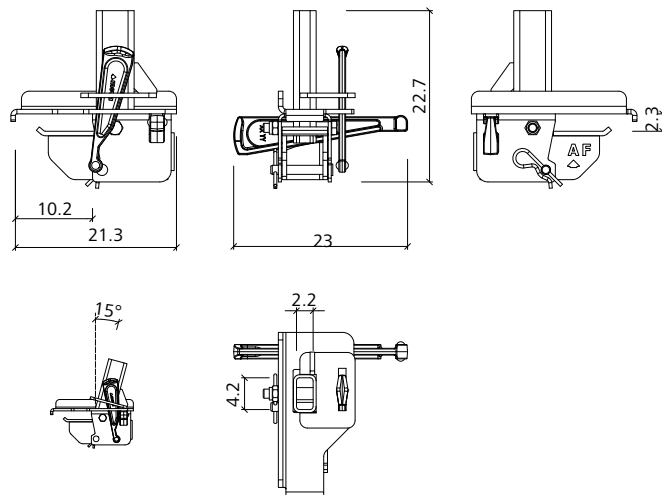
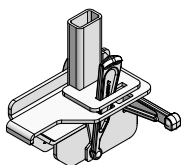
Galvanized. With manifold to be plugged into the walkway bracket and with 48 mm Ø tube to attach scaffold couplers.



Ref.-No.	Description / Application	m <sup>2</sup>	kg
29-106-80	Guard-railing post 48/120 (UK)		5.5

## Tilting bracket 23

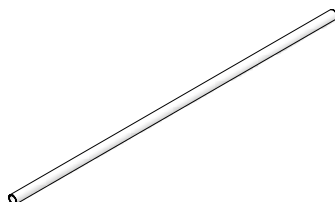
Galvanized. Used to attach MEVA guardrail-ing posts to create a fall protection system. It can be set up vertically to facilitate the installation of safety meshes or railing boards or inclined by 15° to create a larger working area. Secured with a wedge to the frame profile of 23 mm.



Ref.-No.	Description / Application	m <sup>2</sup>	kg
29-920-84	Tilting bracket 23		4.8

## Scaffold tube

Galvanized. Is used as handrail in combination with guard-railing post 48.



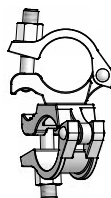
Ref.-No.	Description / Application	m <sup>2</sup>	kg
29-412-23	Scaffold tube 48/200		9.4
29-412-26	Scaffold tube 48/300		14.1
29-412-27	Scaffold tube 48/400		18.8
29-412-25	Scaffold tube 48/500		23.5
29-412-28	Scaffold tube 48/600		28.2

# Wall formwork

## Swivel-joint coupler 48/48

Galvanized. Connects 2 scaffold tubes with 48.3 mm Ø at any angle.

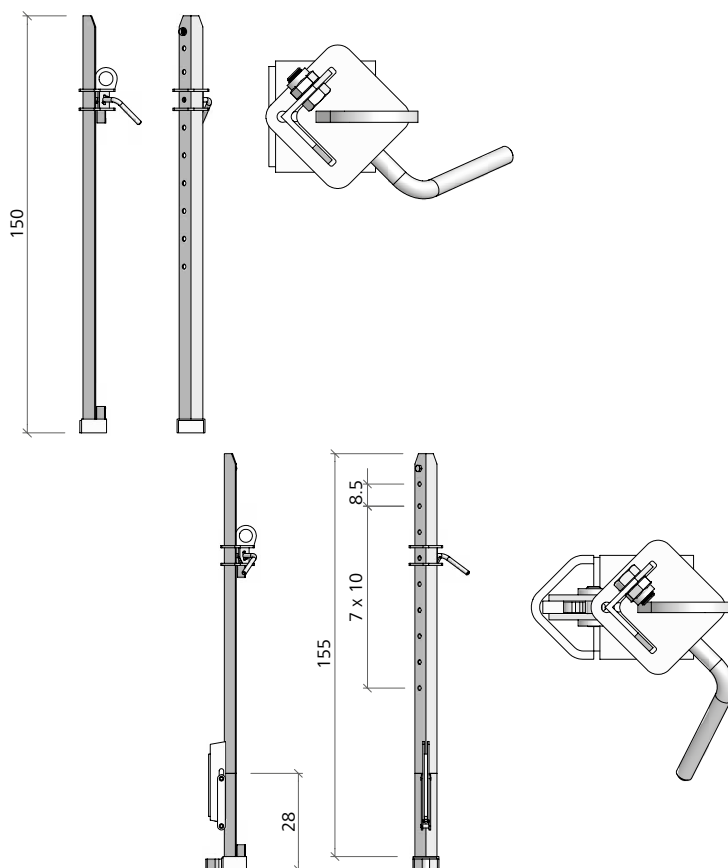
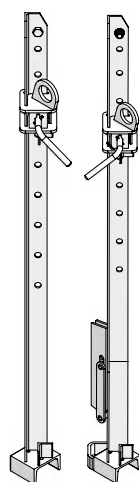
Ref.-No.	Description / Application	m <sup>2</sup>	kg
29-412-52	..... Swivel-joint coupler 48/48.....		1.2



## Transport angle 10

Is used to stack and transport 5 to 12 EcoAs or AluFix panels. Distance between holes 10 cm. We recommend using 2 foldable angles and 2 angles of the rigid type per stack. Max. load capacity is 10 kN per angle. For safety reasons consider 20 kN as maximum capacity for the whole stack.

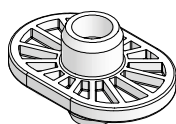
Ref.-No.	Description / Application	m <sup>2</sup>	kg
29-305-10	..... Transport angle 10 .....		16.0
29-305-15	..... Transport angle 10, rigid type.....		10.4



## Safety plug AS/ST stacks, black

Plastic, black. Secures stacked AluFix, EcoAs, AluStar and StarTec panels.

Ref.-No.	Description / Application	m <sup>2</sup>	kg
40-131-10	..... Safety plug AS/ST stacks, black.....		19.0



# Notes

A large grid of small dots for taking notes, consisting of approximately 30 columns and 40 rows.



**MEVA Schalungs-Systeme GmbH**

Industriestrasse 5    Tel. +49 7456 692-01  
72221 Haiterbach    Fax +49 7456 692-66  
Germany            info@meva.net

[www.meva.net](http://www.meva.net)